

**KEYNOTES:**

- TRIM FASTENERS ARE SELF-DRILL PANCAKE HEAD AND MUST BE INSTALLED IN A STAGGERED PATTERN.
- CLIP AND FASTENER MATERIAL: GALVANIZED WHEN STEEL PANELS ARE UTILIZED; STAINLESS STEEL WHEN ALUMINUM PANELS ARE UTILIZED.
- CLIP FASTENERS MUST BE OF SUFFICIENT LENGTH TO PENETRATE PLYWOOD DECK BY 5/8" MINIMUM THREAD LENGTH.
- PLYWOOD DECK MUST BE A **MINIMUM OF 5/8" THICK.**
- ① EAVE FLASHING HEM EDGE: 1 1/2" MINIMUM.
- ② PANEL HEM AND THERMAL GAP CLEARANCE: MINIMUM 1 1/2" HEM WITH 1/2" CLEARANCE. (CONSULT FACTORY).
- ③ FIRST PANEL CLIP TO BE LOCATED A **MAXIMUM OF 8" FROM EAVE.**
- ④ ROOF SIDE FLANGE SHOULD BE STRIPPED IN WITH APPROVED UNDERLAYMENT.
- ⑤ CLEAT: 24 GA. MINIMUM.

Job Name \_\_\_\_\_ Contractor \_\_\_\_\_

Date \_\_\_\_\_ Notes \_\_\_\_\_

**PETERSEN ALUMINUM CORPORATION**

**PAC-CLAD.COM SALES@PETERSENMAIL.COM**

HQ: 1005 Tonne Road  
Elk Grove Village, IL 60007  
P: 800-PAC-CLAD  
F: 800-722-7150

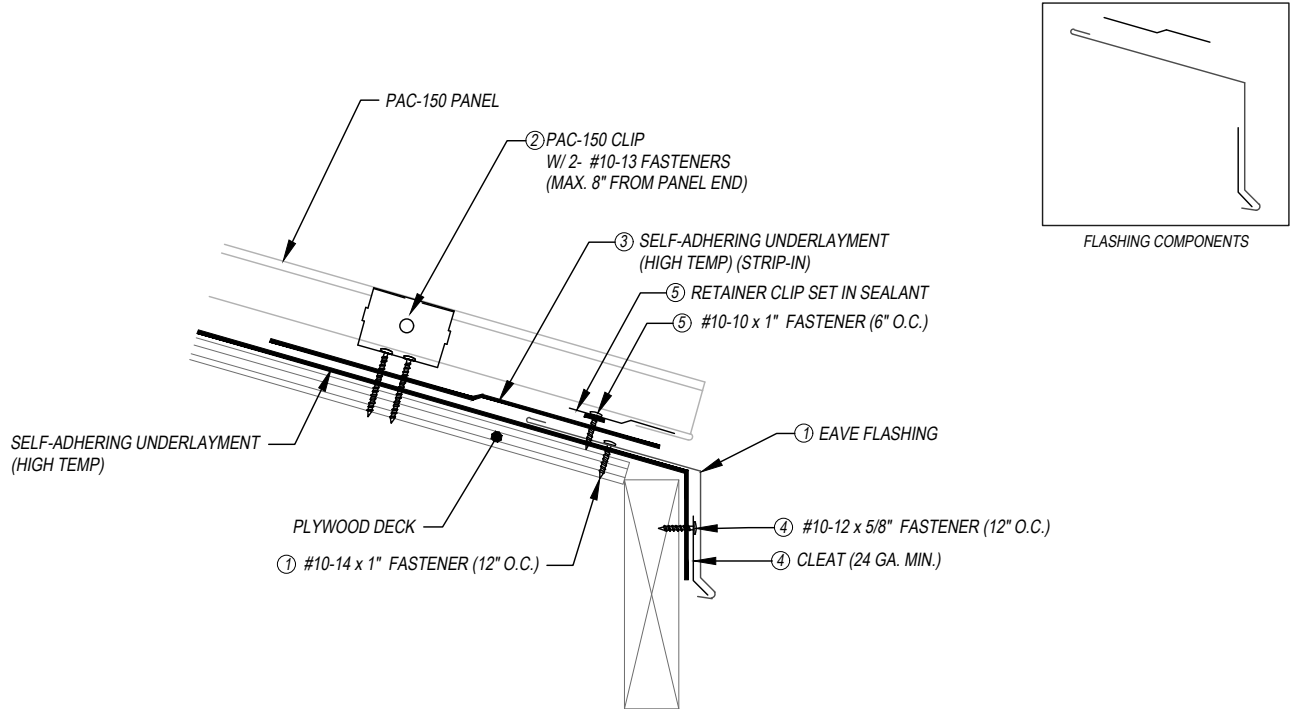
9060 Junction Drive  
Annapolis Junction, MD 20701  
P: 800-344-1400  
F: 301-953-7627

10551 PAC Road  
Tyler, TX 75707  
P: 800-441-8661  
F: 903-581-8592

102 Northpoint Parkway  
Acworth, GA 30102  
P: 800-272-4482  
F: 770-420-2533

1800 S. 7th Ave., Suite 130  
Phoenix, AZ 85007  
P: 833-750-1935  
F: 602-254-6504

1885 Station Parkway NW, Suite B  
Andover, MN 55304  
P: 877-571-2025  
F: 866-901-2935



### KEYNOTES:

- TRIM FASTENERS ARE SELF-DRILL PANCAKE HEAD AND MUST BE INSTALLED IN A STAGGERED PATTERN.
- CLIP AND FASTENER MATERIAL: GALVANIZED WHEN STEEL PANELS ARE UTILIZED; STAINLESS STEEL WHEN ALUMINUM PANELS ARE USED.
- CLIP FASTENERS MUST BE OF SUFFICIENT LENGTH TO PENETRATE PLYWOOD DECK BY 5/8" MINIMUM THREAD LENGTH.
- PLYWOOD DECK MUST BE A **MINIMUM OF 5/8" THICK.**
- ① EAVE FLASHING FASTENED AT 12" ON-CENTER MAXIMUM.
- ② FIRST PANEL CLIP TO BE LOCATED A **MAXIMUM OF 8" FROM EAVE.**
- ③ ROOF SIDE FLANGE SHOULD BE STRIPPED IN WITH APPROVED UNDERLAYMENT.
- ④ CLEAT: 24 GA. MINIMUM.
- ⑤ RETAINER CLIP: FASTENED TO SUPPORT PLATE AT 6" O.C. STAGGERED PATTERN.

Job Name \_\_\_\_\_ Contractor \_\_\_\_\_

Date \_\_\_\_\_ Notes \_\_\_\_\_

**PETERSEN ALUMINUM CORPORATION**

PAC-CLAD.COM SALES@PETERSENMAIL.COM

HQ: 1005 Tonne Road  
Elk Grove Village, IL 60007  
P: 800-PAC-CLAD  
F: 800-722-7150

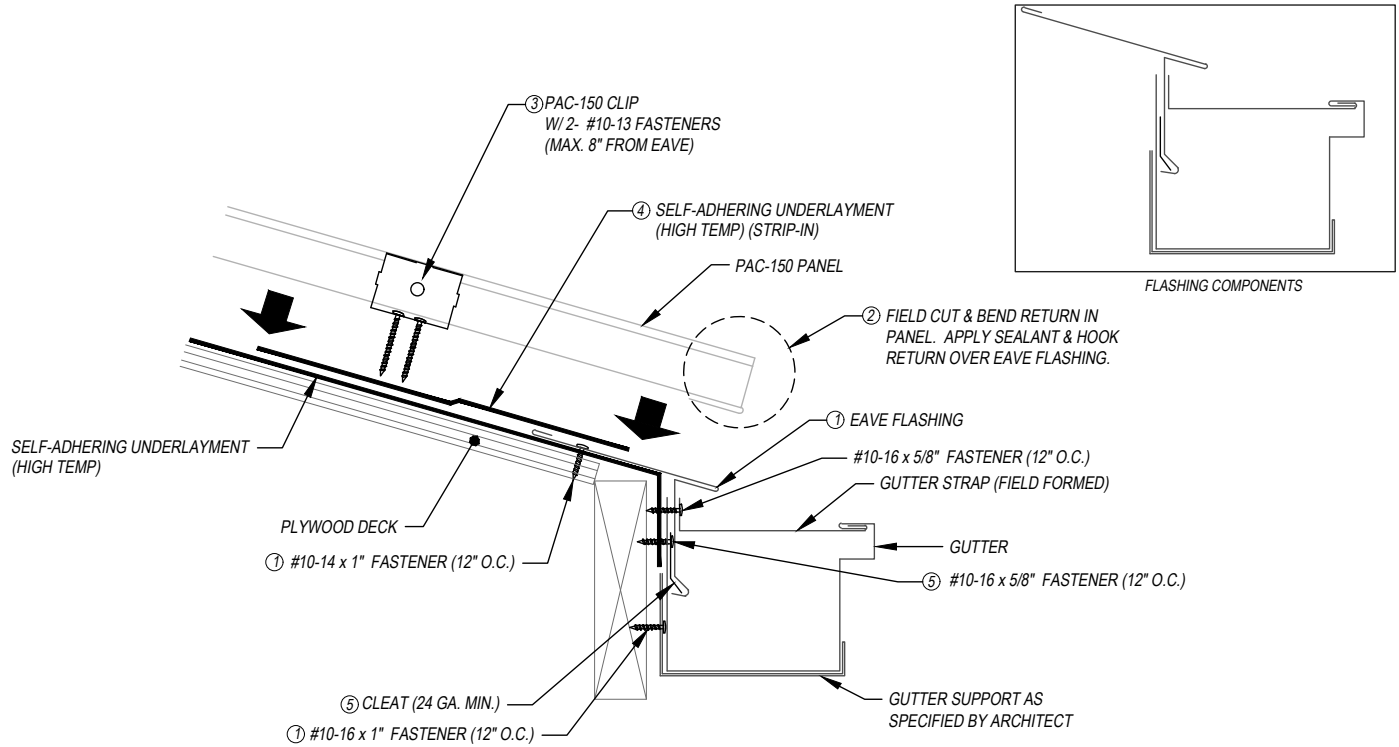
9060 Junction Drive  
Annapolis Junction, MD 20701  
P: 800-344-1400  
F: 301-953-7627

10551 PAC Road  
Tyler, TX 75707  
P: 800-441-8661  
F: 903-581-8592

102 Northpoint Parkway  
Acworth, GA 30102  
P: 800-272-4482  
F: 770-420-2533

1800 S. 7th Ave., Suite 130  
Phoenix, AZ 85007  
P: 833-750-1935  
F: 602-254-6504

1885 Station Parkway NW, Suite B  
Andover, MN 55304  
P: 877-571-2025  
F: 866-901-2935



**KEYNOTES:**

- TRIM FASTENERS ARE SELF-DRILL PANCAKE HEAD AND MUST BE INSTALLED IN A STAGGERED PATTERN.
  - CLIP AND FASTENER MATERIAL: GALVANIZED WHEN STEEL PANELS ARE UTILIZED; STAINLESS STEEL WHEN ALUMINUM PANELS ARE UTILIZED.
  - CLIP FASTENERS MUST BE OF SUFFICIENT LENGTH TO PENETRATE PLYWOOD DECK BY 5/8" MINIMUM THREAD LENGTH.
  - PLYWOOD DECK MUST BE A **MINIMUM OF 5/8" THICK.**
- ① EAVE FLASHING HEM EDGE: 1 1/2" MINIMUM.
  - ② PANEL HEM AND THERMAL GAP CLEARANCE: MINIMUM 1 1/2" HEM WITH 1/2" CLEARANCE. (CONSULT FACTORY).
  - ③ FIRST PANEL CLIP TO BE LOCATED A **MAXIMUM OF 8" FROM EAVE.**
  - ④ ROOF SIDE FLANGE SHOULD BE STRIPPED IN WITH APPROVED UNDERLAYMENT.
  - ⑤ CLEAT: 24 GA. MINIMUM

Job Name \_\_\_\_\_ Contractor \_\_\_\_\_

Date \_\_\_\_\_ Notes \_\_\_\_\_

**PETERSEN ALUMINUM CORPORATION**

**PAC-CLAD.COM SALES@PETERSENMAIL.COM**

HQ: 1005 Tonne Road  
Elk Grove Village, IL 60007  
P: 800-PAC-CLAD  
F: 800-722-7150

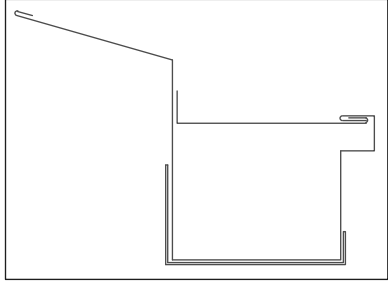
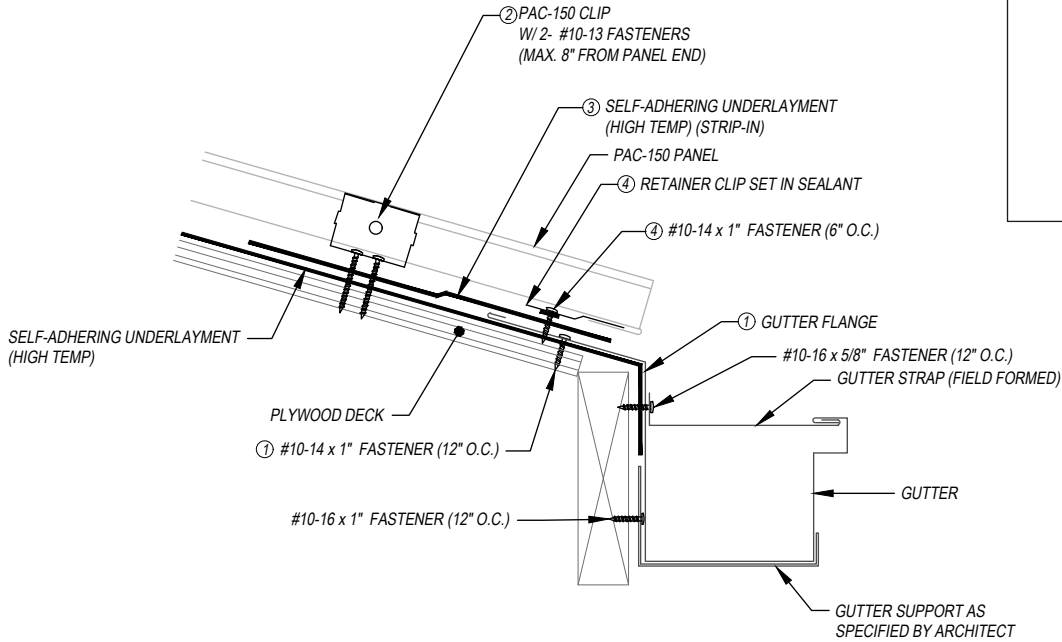
9060 Junction Drive  
Annapolis Junction, MD 20701  
P: 800-344-1400  
F: 301-953-7627

10551 PAC Road  
Tyler, TX 75707  
P: 800-441-8661  
F: 903-581-8592

102 Northpoint Parkway  
Acworth, GA 30102  
P: 800-272-4482  
F: 770-420-2533

1800 S. 7th Ave., Suite 130  
Phoenix, AZ 85007  
P: 833-750-1935  
F: 602-254-6504

1885 Station Parkway NW, Suite B  
Andover, MN 55304  
P: 877-571-2025  
F: 866-901-2935



FLASHING COMPONENTS

**KEYNOTES:**

- TRIM FASTENERS ARE SELF-DRILL PANCAKE HEAD AND MUST BE INSTALLED IN A STAGGERED PATTERN.
  - CLIP AND FASTENER MATERIAL: GALVANIZED WHEN STEEL PANELS ARE UTILIZED; STAINLESS STEEL WHEN ALUMINUM PANELS ARE UTILIZED.
  - CLIP FASTENERS MUST BE OF SUFFICIENT LENGTH TO PENETRATE PLYWOOD DECK BY 5/8" MINIMUM THREAD LENGTH.
  - PLYWOOD DECK MUST BE A **MINIMUM OF 5/8" THICK.**
- ① GUTTER FLANGE FASTENED AT MAXIMUM 12" ON-CENTER, STAGGERED PATTERN.
  - ② FIRST PANEL CLIP TO BE LOCATED A **MAXIMUM OF 8" FROM EAVE.**
  - ③ ROOF SIDE FLANGE SHOULD BE STRIPPED IN WITH APPROVED UNDERLAYMENT.
  - ④ RETAINER CLIP: FASTENED TO SUPPORT PLATE AT 6" O.C., STAGGERED PATTERN.

Job Name \_\_\_\_\_ Contractor \_\_\_\_\_

Date \_\_\_\_\_ Notes \_\_\_\_\_

**PETERSEN ALUMINUM CORPORATION**

PAC-CLAD.COM SALES@PETERSENMAIL.COM

HQ: 1005 Tonne Road  
Elk Grove Village, IL 60007  
P: 800-PAC-CLAD  
F: 800-722-7150

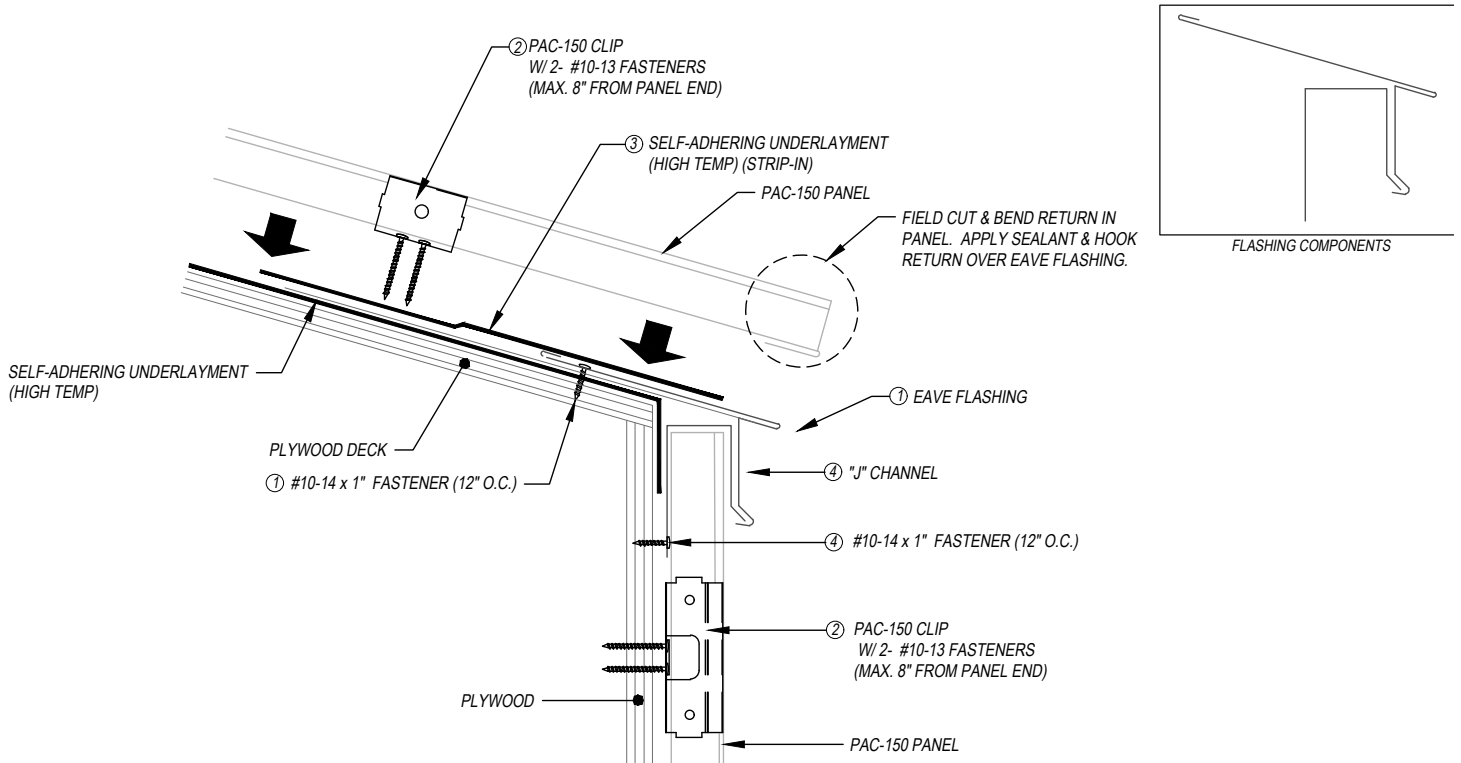
9060 Junction Drive  
Annapolis Junction, MD 20701  
P: 800-344-1400  
F: 301-953-7627

10551 PAC Road  
Tyler, TX 75707  
P: 800-441-8661  
F: 903-581-8592

102 Northpoint Parkway  
Acworth, GA 30102  
P: 800-272-4482  
F: 770-420-2533

1800 S. 7th Ave., Suite 130  
Phoenix, AZ 85007  
P: 833-750-1935  
F: 602-254-6504

1885 Station Parkway NW, Suite B  
Andover, MN 55304  
P: 877-571-2025  
F: 866-901-2935



KEYNOTES:

- TRIM FASTENERS ARE SELF-DRILL PANCAKE HEAD AND MUST BE INSTALLED IN A STAGGERED PATTERN.
  - CLIP AND FASTENER MATERIAL: GALVANIZED WHEN STEEL PANELS ARE UTILIZED; STAINLESS STEEL WHEN ALUMINUM PANELS ARE UTILIZED.
  - CLIP FASTENERS MUST BE OF SUFFICIENT LENGTH TO PENETRATE PLYWOOD DECK BY 5/8" MINIMUM THREAD LENGTH.
  - PLYWOOD DECK MUST BE A **MINIMUM OF 5/8" THICK.**
- ① EAVE FLASHING HEM EDGE: 1 1/2" MINIMUM.
  - ② FIRST PANEL CLIP TO BE LOCATED A **MAXIMUM OF 8" FROM PANEL END.**
  - ③ ROOF SIDE FLANGE SHOULD BE STRIPPED IN WITH APPROVED UNDERLAYMENT.
  - ④ "J" CHANNEL: ATTACHED AT MAXIMUM 12" ON-CENTER.

Job Name \_\_\_\_\_ Contractor \_\_\_\_\_

Date \_\_\_\_\_ Notes \_\_\_\_\_

**PETERSEN ALUMINUM CORPORATION**

**PAC-CLAD.COM SALES@PETERSENMAIL.COM**

HQ: 1005 Tonne Road  
Elk Grove Village, IL 60007  
P: 800-PAC-CLAD  
F: 800-722-7150

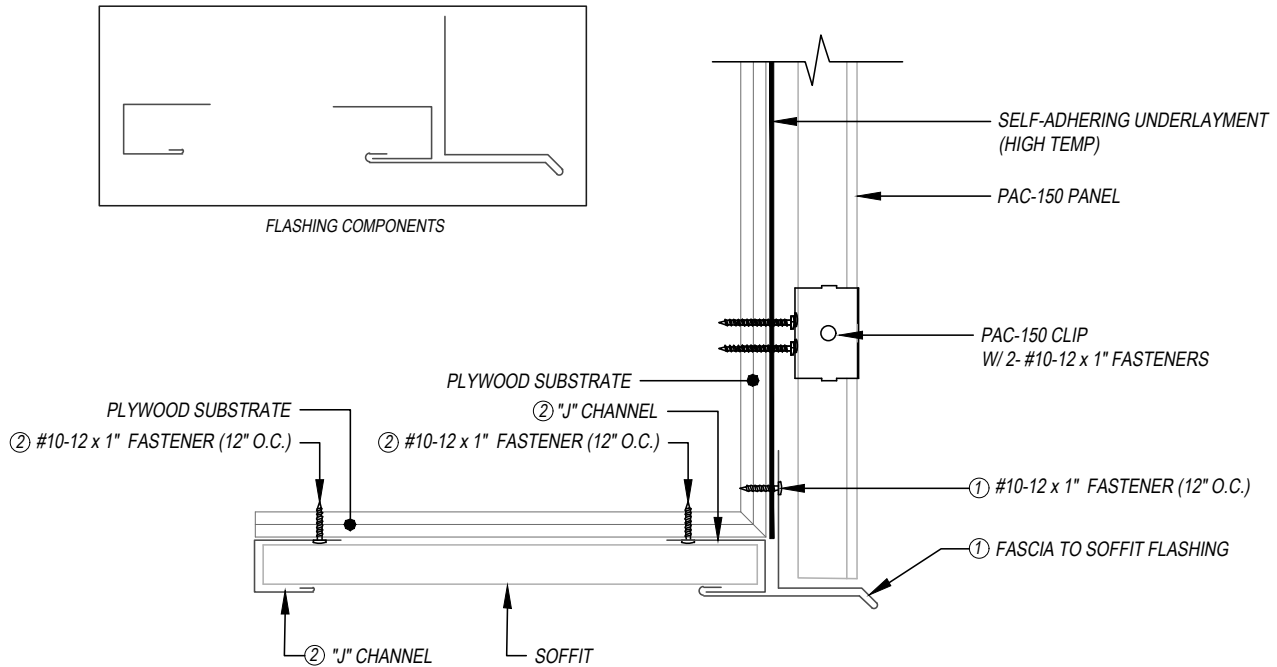
9060 Junction Drive  
Annapolis Junction, MD 20701  
P: 800-344-1400  
F: 301-953-7627

10551 PAC Road  
Tyler, TX 75707  
P: 800-441-8661  
F: 903-581-8592

102 Northpoint Parkway  
Acworth, GA 30102  
P: 800-272-4482  
F: 770-420-2533

1800 S. 7th Ave., Suite 130  
Phoenix, AZ 85007  
P: 833-750-1935  
F: 602-254-6504

1885 Station Parkway NW, Suite B  
Andover, MN 55304  
P: 877-571-2025  
F: 866-901-2935



**KEYNOTES:**

- TRIM FASTENERS ARE SELF-DRILL PANCAKE HEAD AND MUST BE INSTALLED IN A STAGGERED PATTERN.
- CLIPS AND FASTENERS MATERIAL: GALVANIZED WHEN STEEL PANELS ARE UTILIZED; STAINLESS STEEL WHEN ALUMINUM PANELS ARE UTILIZED.
- ① FASCIA TO SOFFIT FLASHING:
  - FASTENED WITH #10 FASTENER AT MAXIMUM 12" ON-CENTER (STAGGERED PATTERN).
  - VERTICAL LEG SHOULD BE A MINIMUM OF 3" LONG WITH FASTENER LOCATED 2" MAXIMUM FROM EDGE.
- ② "J" CHANNEL: FASTENED WITH #10 FASTENER AT MAXIMUM 12" ON-CENTER (STAGGERED PATTERN).

Job Name \_\_\_\_\_ Contractor \_\_\_\_\_

Date \_\_\_\_\_ Notes \_\_\_\_\_

**PETERSEN ALUMINUM CORPORATION**

**PAC-CLAD.COM SALES@PETERSENMAIL.COM**

HQ: 1005 Tonne Road  
Elk Grove Village, IL 60007  
P: 800-PAC-CLAD  
F: 800-722-7150

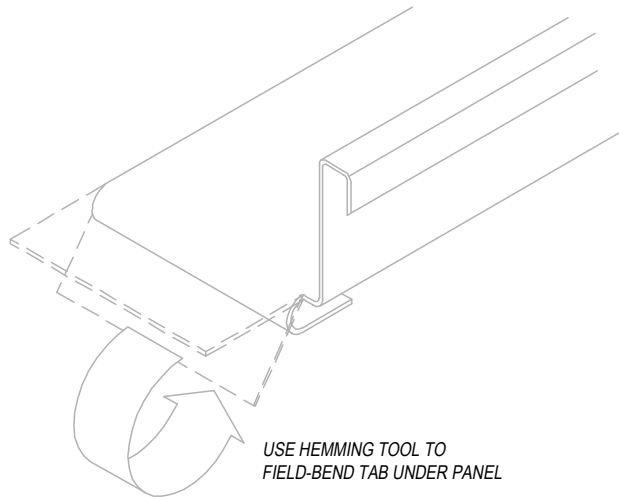
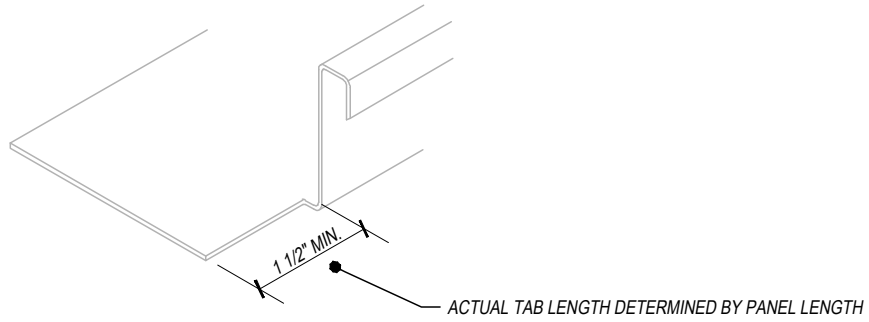
9060 Junction Drive  
Annapolis Junction, MD 20701  
P: 800-344-1400  
F: 301-953-7627

10551 PAC Road  
Tyler, TX 75707  
P: 800-441-8661  
F: 903-581-8592

102 Northpoint Parkway  
Acworth, GA 30102  
P: 800-272-4482  
F: 770-420-2533

1800 S. 7th Ave., Suite 130  
Phoenix, AZ 85007  
P: 833-750-1935  
F: 602-254-6504

1885 Station Parkway NW, Suite B  
Andover, MN 55304  
P: 877-571-2025  
F: 866-901-2935



Job Name \_\_\_\_\_ Contractor \_\_\_\_\_

Date \_\_\_\_\_ Notes \_\_\_\_\_

**PETERSEN ALUMINUM CORPORATION**

PAC-CLAD.COM SALES@PETERSENMAIL.COM

HQ: 1005 Tonne Road  
Elk Grove Village, IL 60007  
P: 800-PAC-CLAD  
F: 800-722-7150

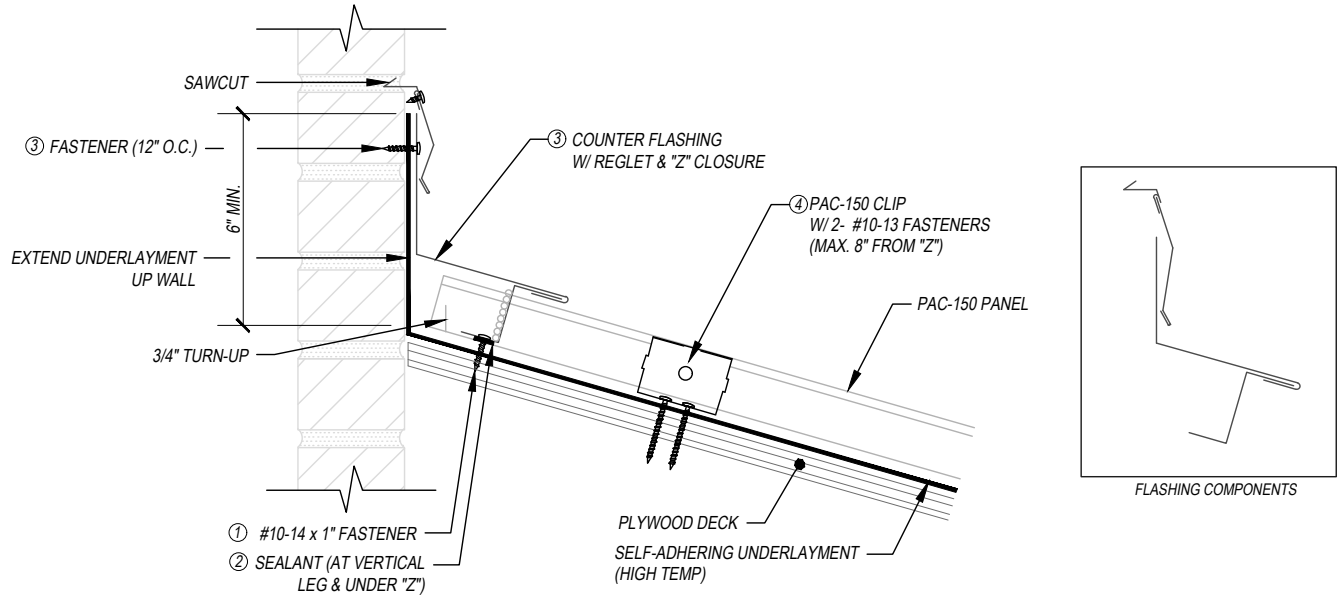
9060 Junction Drive  
Annapolis Junction, MD 20701  
P: 800-344-1400  
F: 301-953-7627

10551 PAC Road  
Tyler, TX 75707  
P: 800-441-8661  
F: 903-581-8592

102 Northpoint Parkway  
Acworth, GA 30102  
P: 800-272-4482  
F: 770-420-2533

1800 S. 7th Ave., Suite 130  
Phoenix, AZ 85007  
P: 833-750-1935  
F: 602-254-6504

1885 Station Parkway NW, Suite B  
Andover, MN 55304  
P: 877-571-2025  
F: 866-901-2935



**KEYNOTES:**

- TRIM FASTENERS ARE SELF-DRILL PANCAKE HEAD AND MUST BE INSTALLED IN A STAGGERED PATTERN.
- CLIP AND FASTENER MATERIAL: GALVANIZED WHEN STEEL PANELS ARE UTILIZED; STAINLESS STEEL WHEN ALUMINUM PANELS ARE UTILIZED.
- CLIP FASTENERS MUST BE OF SUFFICIENT LENGTH TO PENETRATE PLYWOOD DECK BY 5/8" MINIMUM THREAD LENGTH.
- PLYWOOD DECK MUST BE A **MINIMUM OF 5/8" THICK.**
- ① "Z" COMPONENT
  - MINIMUM HEIGHT: 1/8" CLEARANCE OF PANEL RIB
  - FASTENED AS FOLLOWS: 12" & 16" PANELS (4 FASTENERS PER PANEL MINIMUM); 18" PANELS (6 FASTENERS PER PANEL MINIMUM)
  - FASTENING LEG: 1 1/4" MINIMUM TOP LEG: 1 1/2" MINIMUM
  - "Z" MUST BE CUT TO TIGHT FIT OF PANEL DIMENSION: **1/8" MAXIMUM GAP**
- ② SEALANT
  - TUBE OR TAPE SEALANT IS ACCEPTABLE BELOW THE "Z"
  - TUBE SEALANT PLACED AT BACKSIDE OF VERTICAL LEGS
  - 1" TAPE WIDTH OR 1/2" BEAD WIDTH PRIOR TO COMPRESSION
- ③ COUNTER FLASHING: HEMMED 1" AND FULLY ENGAGED TO "Z" CLOSURE.
- ④ FIRST PANEL CLIP TO BE LOCATED A **MAXIMUM OF 8" FROM "Z" COMPONENT.**

Job Name \_\_\_\_\_ Contractor \_\_\_\_\_

Date \_\_\_\_\_ Notes \_\_\_\_\_

**PETERSEN ALUMINUM CORPORATION**

**PAC-CLAD.COM SALES@PETERSENMAIL.COM**

HQ: 1005 Tonne Road  
Elk Grove Village, IL 60007  
P: 800-PAC-CLAD  
F: 800-722-7150

9060 Junction Drive  
Annapolis Junction, MD 20701  
P: 800-344-1400  
F: 301-953-7627

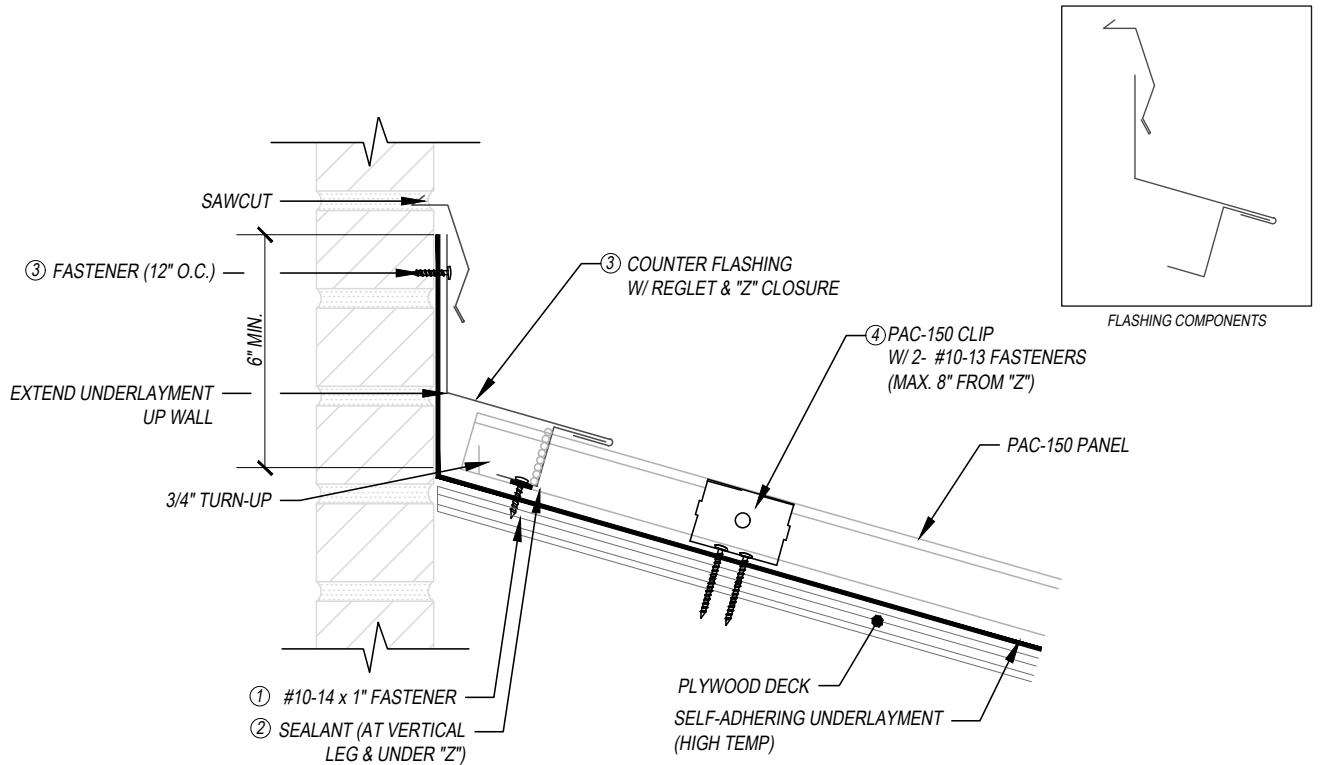
10551 PAC Road  
Tyler, TX 75707  
P: 800-441-8661  
F: 903-581-8592

102 Northpoint Parkway  
Acworth, GA 30102  
P: 800-272-4482  
F: 770-420-2533

1800 S. 7th Ave., Suite 130  
Phoenix, AZ 85007  
P: 833-750-1935  
F: 602-254-6504

1885 Station Parkway NW, Suite B  
Andover, MN 55304  
P: 877-571-2025  
F: 866-901-2935



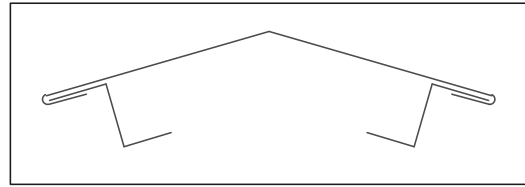


**KEYNOTES:**

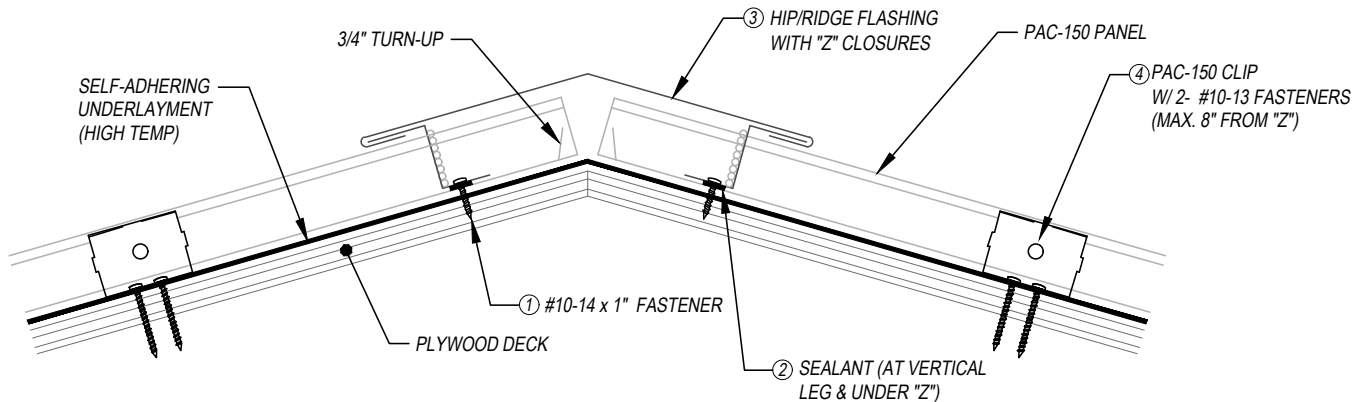
- TRIM FASTENERS ARE SELF-DRILL PANCAKE HEAD AND MUST BE INSTALLED IN A STAGGERED PATTERN.
  - CLIP AND FASTENER MATERIAL: GALVANIZED WHEN STEEL PANELS ARE UTILIZED; STAINLESS STEEL WHEN ALUMINUM PANELS ARE UTILIZED.
  - CLIP FASTENERS MUST BE OF SUFFICIENT LENGTH TO PENETRATE PLYWOOD DECK BY 5/8" MINIMUM THREAD LENGTH.
  - PLYWOOD DECK MUST BE A **MINIMUM OF 5/8" THICK.**
- ① "Z" COMPONENT
    - MINIMUM HEIGHT: 1/8" CLEARANCE OF PANEL RIB
    - FASTENED AS FOLLOWS: 12" & 16" PANELS (4 FASTENERS PER PANEL MINIMUM); 18" PANELS (6 FASTENERS PER PANEL MINIMUM)
    - FASTENING LEG: 1 1/4" MINIMUM TOP LEG: 1 1/2" MINIMUM
    - "Z" MUST BE CUT TO TIGHT FIT OF PANEL DIMENSION: **1/8" MAXIMUM GAP**
  - ② SEALANT
    - TUBE OR TAPE SEALANT IS ACCEPTABLE BELOW THE "Z"
    - TUBE SEALANT PLACED AT BACKSIDE OF VERTICAL LEGS
    - 1" TAPE WIDTH OR 1/2" BEAD WIDTH PRIOR TO COMPRESSION
  - ③ COUNTER FLASHING: HEMMED 1" AND FULLY ENGAGED TO "Z" CLOSURE.
  - ④ FIRST PANEL CLIP TO BE LOCATED A **MAXIMUM OF 8" FROM "Z" COMPONENT.**

Job Name \_\_\_\_\_ Contractor \_\_\_\_\_

Date \_\_\_\_\_ Notes \_\_\_\_\_



FLASHING COMPONENTS



**KEYNOTES:**

- TRIM FASTENERS ARE SELF-DRILL PANCAKE HEAD AND MUST BE INSTALLED IN A STAGGERED PATTERN.
- CLIP AND FASTENER MATERIAL: GALVANIZED WHEN STEEL PANELS ARE UTILIZED; STAINLESS STEEL WHEN ALUMINUM PANELS ARE UTILIZED.
- CLIP FASTENERS MUST BE OF SUFFICIENT LENGTH TO PENETRATE PLYWOOD DECK BY 5/8" MINIMUM THREAD LENGTH.
- PLYWOOD DECK MUST BE A **MINIMUM OF 5/8" THICK.**
- ① "Z" COMPONENT
  - MINIMUM HEIGHT: 1/8" CLEARANCE OF PANEL RIB
  - FASTENED AS FOLLOWS: 12" & 16" PANELS (4 FASTENERS PER PANEL MINIMUM); 18" PANELS (6 FASTENERS PER PANEL MINIMUM)
  - FASTENING LEG: 1 1/4" MINIMUM TOP LEG: 1 1/2" MINIMUM
  - "Z" MUST BE CUT TO TIGHT FIT OF PANEL DIMENSION: **1/8" MAXIMUM GAP**
- ② SEALANT
  - TUBE OR TAPE SEALANT IS ACCEPTABLE BELOW THE "Z"
  - TUBE SEALANT PLACED AT BACKSIDE OF VERTICAL LEGS
  - 1" TAPE WIDTH OR 1/2" BEAD WIDTH PRIOR TO COMPRESSION
- ③ COVER: HEMMED 1" AND FULLY ENGAGED TO "Z" CLOSURE.
- ④ FIRST PANEL CLIP TO BE LOCATED A **MAXIMUM OF 8" FROM "Z" COMPONENT.**

Job Name \_\_\_\_\_ Contractor \_\_\_\_\_

Date \_\_\_\_\_ Notes \_\_\_\_\_

**PETERSEN ALUMINUM CORPORATION**

PAC-CLAD.COM SALES@PETERSENMAIL.COM

HQ: 1005 Tonne Road  
Elk Grove Village, IL 60007  
P: 800-PAC-CLAD  
F: 800-722-7150

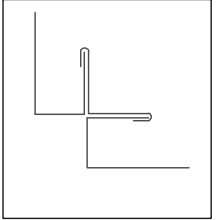
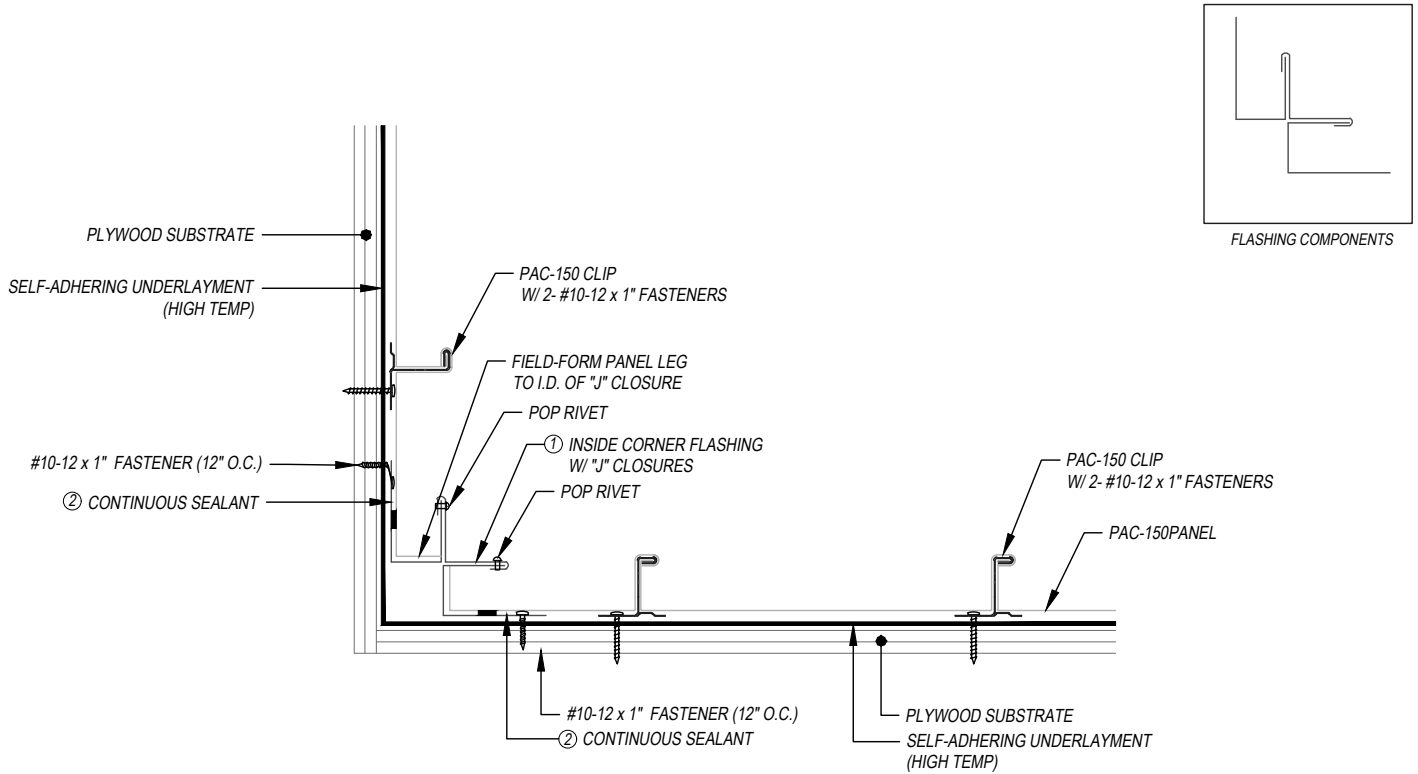
9060 Junction Drive  
Annapolis Junction, MD 20701  
P: 800-344-1400  
F: 301-953-7627

10551 PAC Road  
Tyler, TX 75707  
P: 800-441-8661  
F: 903-581-8592

102 Northpoint Parkway  
Acworth, GA 30102  
P: 800-272-4482  
F: 770-420-2533

1800 S. 7th Ave., Suite 130  
Phoenix, AZ 85007  
P: 833-750-1935  
F: 602-254-6504

1885 Station Parkway NW, Suite B  
Andover, MN 55304  
P: 877-571-2025  
F: 866-901-2935



**KEYNOTES:**

- TRIM FASTENERS ARE SELF-DRILL PANCAKE HEAD AND MUST BE INSTALLED IN A STAGGERED PATTERN.
- CLIPS AND FASTENERS MATERIAL: GALVANIZED WHEN STEEL PANELS ARE UTILIZED; STAINLESS STEEL WHEN ALUMINUM PANELS ARE UTILIZED.
- ① INSIDE CORNER FLASHING
  - PANEL LEG MUST BE FORMED TO WITHIN 1/8" OF J-CHANNEL WEB.
  - DECK SIDE LEG SHOULD BE A MINIMUM OF 3" LONG WITH FASTENER LOCATED 2" MAXIMUM FROM EDGE.
  - J-CHANNEL FORMED TO HEIGHT OF PANEL RIB.
- ② SEALANT CAN BE TUBE OR TAPE SEALANT AND MUST BE CONTINUOUS.

Job Name \_\_\_\_\_ Contractor \_\_\_\_\_

Date \_\_\_\_\_ Notes \_\_\_\_\_

**PETERSEN ALUMINUM CORPORATION**

**PAC-CLAD.COM SALES@PETERSENMAIL.COM**

HQ: 1005 Tonne Road  
Elk Grove Village, IL 60007  
P: 800-PAC-CLAD  
F: 800-722-7150

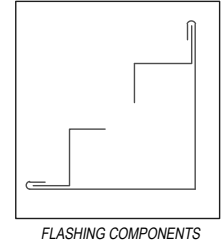
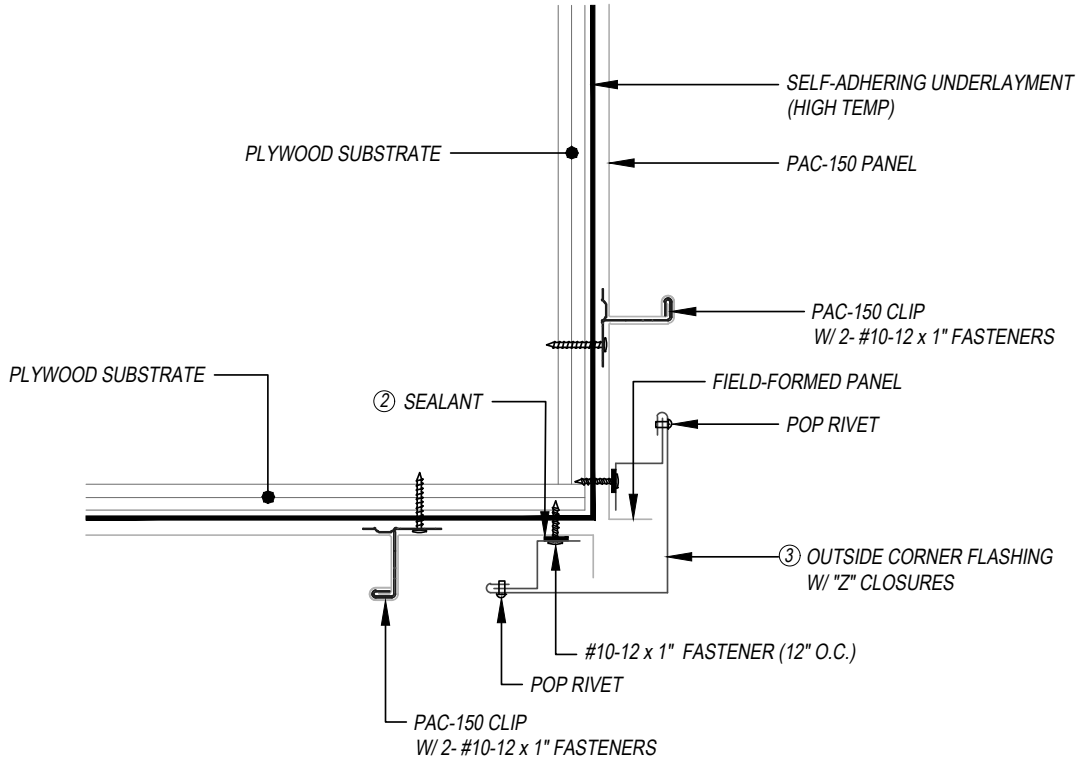
9060 Junction Drive  
Annapolis Junction, MD 20701  
P: 800-344-1400  
F: 301-953-7627

10551 PAC Road  
Tyler, TX 75707  
P: 800-441-8661  
F: 903-581-8592

102 Northpoint Parkway  
Acworth, GA 30102  
P: 800-272-4482  
F: 770-420-2533

1800 S. 7th Ave., Suite 130  
Phoenix, AZ 85007  
P: 833-750-1935  
F: 602-254-6504

1885 Station Parkway NW, Suite B  
Andover, MN 55304  
P: 877-571-2025  
F: 866-901-2935



**KEYNOTES:**

- TRIM FASTENERS ARE SELF-DRILL PANCAKE HEAD AND MUST BE INSTALLED IN A STAGGERED PATTERN.
- CLIPS AND FASTENERS MATERIAL: GALVANIZED WHEN STEEL PANELS ARE UTILIZED; STAINLESS STEEL WHEN ALUMINUM PANELS ARE UTILIZED.
- ① "Z" COMPONENT
  - MINIMUM HEIGHT: 1/8" CLEARANCE OF PANEL RIB
  - FASTENING LEG: 1 1/4" MINIMUM TOP LEG: 1 1/2" MINIMUM
- ② SEALANT
  - TUBE OR TAPE SEALANT IS ACCEPTABLE BELOW THE "Z"
  - 1" TAPE WIDTH OR 1/2" BEAD WIDTH PRIOR TO COMPRESSION
- ③ OUTSIDE CORNER FLASHING
  - HEMMED 1" AND FULLY ENGAGED TO "Z" CLOSURE.

Job Name \_\_\_\_\_ Contractor \_\_\_\_\_

Date \_\_\_\_\_ Notes \_\_\_\_\_

**PETERSEN ALUMINUM CORPORATION**

PAC-CLAD.COM SALES@PETERSENMAIL.COM

HQ: 1005 Tonne Road  
Elk Grove Village, IL 60007  
P: 800-PAC-CLAD  
F: 800-722-7150

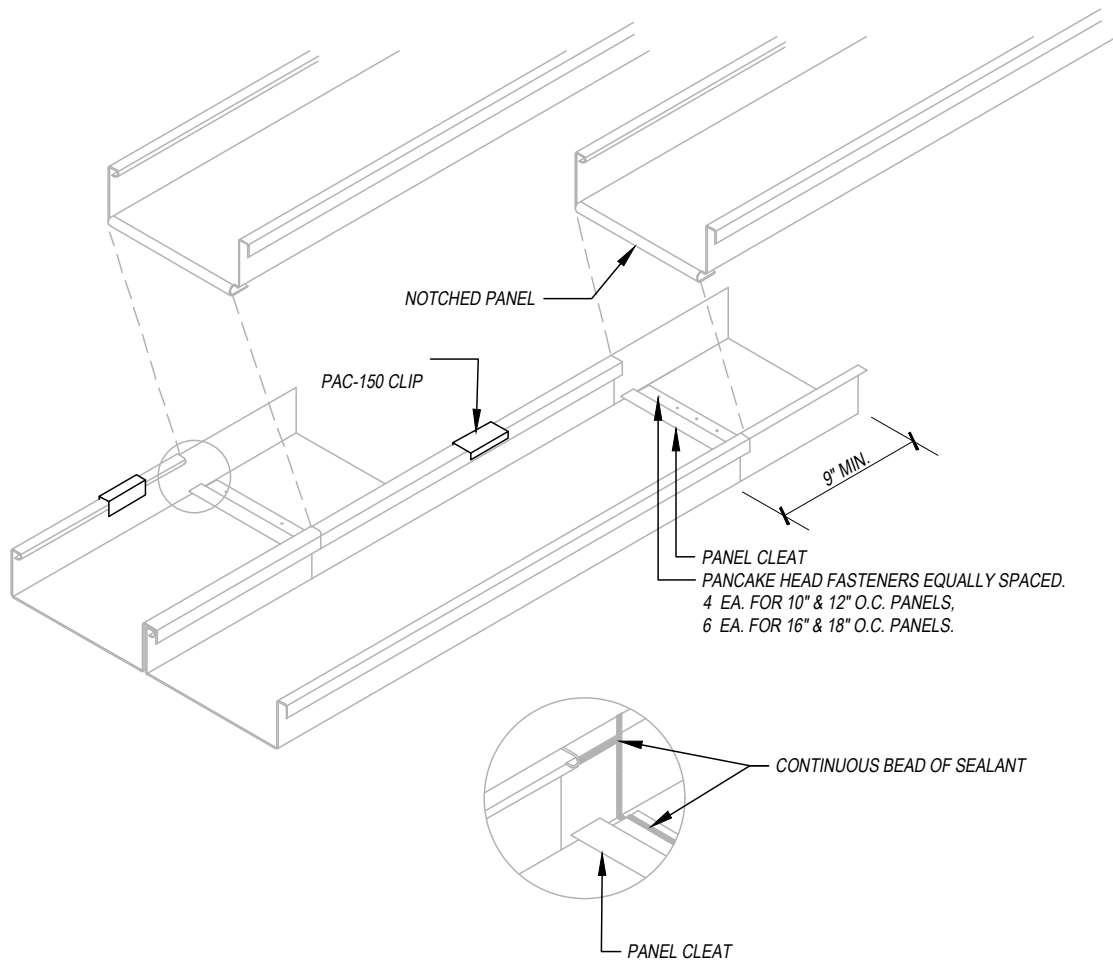
9060 Junction Drive  
Annapolis Junction, MD 20701  
P: 800-344-1400  
F: 301-953-7627

10551 PAC Road  
Tyler, TX 75707  
P: 800-441-8661  
F: 903-581-8592

102 Northpoint Parkway  
Acworth, GA 30102  
P: 800-272-4482  
F: 770-420-2533

1800 S. 7th Ave., Suite 130  
Phoenix, AZ 85007  
P: 833-750-1935  
F: 602-254-6504

1885 Station Parkway NW, Suite B  
Andover, MN 55304  
P: 877-571-2025  
F: 866-901-2935



**NOTE: LAPS MUST BE STAGGERED 2' OR 4'.**

Job Name \_\_\_\_\_ Contractor \_\_\_\_\_

Date \_\_\_\_\_ Notes \_\_\_\_\_

**PETERSEN ALUMINUM CORPORATION**

**PAC-CLAD.COM SALES@PETERSENMAIL.COM**

HQ: 1005 Tonne Road  
Elk Grove Village, IL 60007  
P: 800-PAC-CLAD  
F: 800-722-7150

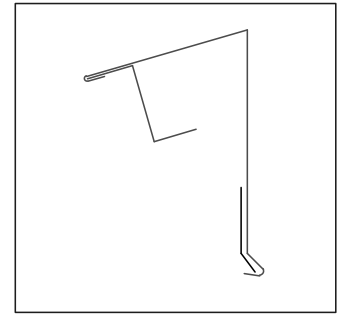
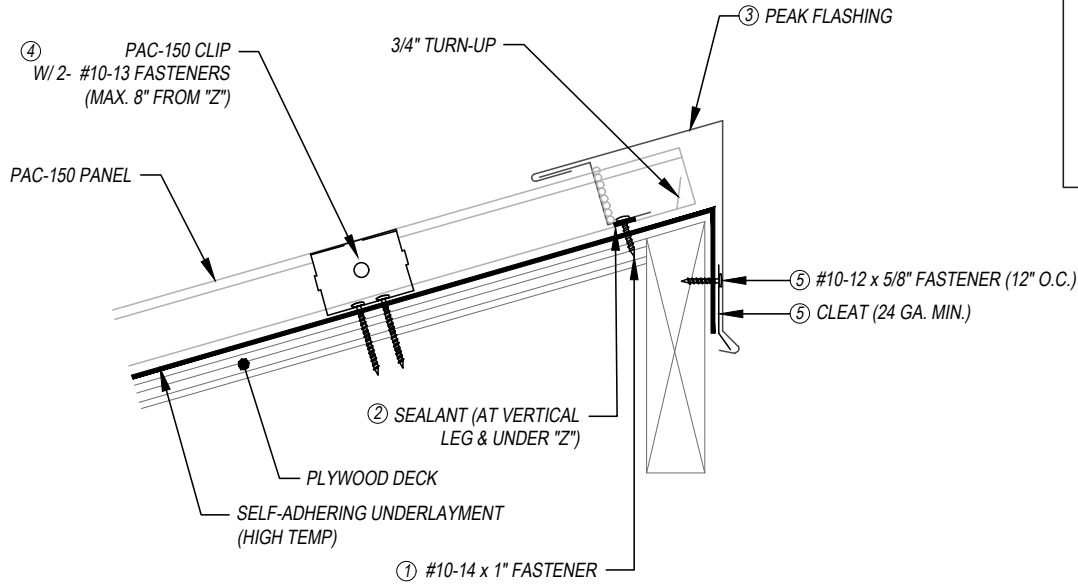
9060 Junction Drive  
Annapolis Junction, MD 20701  
P: 800-344-1400  
F: 301-953-7627

10551 PAC Road  
Tyler, TX 75707  
P: 800-441-8661  
F: 903-581-8592

102 Northpoint Parkway  
Acworth, GA 30102  
P: 800-272-4482  
F: 770-420-2533

1800 S. 7th Ave., Suite 130  
Phoenix, AZ 85007  
P: 833-750-1935  
F: 602-254-6504

1885 Station Parkway NW, Suite B  
Andover, MN 55304  
P: 877-571-2025  
F: 866-901-2935



FLASHING COMPONENTS

**KEYNOTES:**

- TRIM FASTENERS ARE SELF-DRILL PANCAKE HEAD AND MUST BE INSTALLED IN A STAGGERED PATTERN.
  - CLIP AND FASTENER MATERIAL: GALVANIZED WHEN STEEL PANELS ARE UTILIZED; STAINLESS STEEL WHEN ALUMINUM PANELS ARE UTILIZED.
  - CLIP FASTENERS MUST BE OF SUFFICIENT LENGTH TO PENETRATE PLYWOOD DECK BY 5/8" MINIMUM THREAD LENGTH.
  - PLYWOOD DECK MUST BE A **MINIMUM OF 5/8" THICK.**
- ① "Z" COMPONENT
- MINIMUM HEIGHT: 1/8" CLEARANCE OF PANEL RIB
  - FASTENED AS FOLLOWS: 12" & 16" PANELS (4 FASTENERS PER PANEL MINIMUM); 18" PANELS (6 FASTENERS PER PANEL MINIMUM)
  - FASTENING LEG: 1 1/4" MINIMUM TOP LEG: 1 1/2" MINIMUM
  - "Z" MUST BE CUT TO TIGHT FIT OF PANEL DIMENSION: **1/8" MAXIMUM GAP**
- ② SEALANT
- TUBE OR TAPE SEALANT IS ACCEPTABLE BELOW THE "Z"
  - TUBE SEALANT PLACED AT BACKSIDE OF VERTICAL LEGS
  - 1" TAPE WIDTH OR 1/2" BEAD WIDTH PRIOR TO COMPRESSION
- ③ PEAK FLASHING: HEMMED 1" AND FULLY ENGAGED TO "Z" CLOSURE.
- ④ FIRST PANEL CLIP TO BE LOCATED A **MAXIMUM OF 8" FROM "Z" COMPONENT.**
- ⑤ CLEAT: 24 GA. MINIMUM.

Job Name \_\_\_\_\_ Contractor \_\_\_\_\_

Date \_\_\_\_\_ Notes \_\_\_\_\_

**PETERSEN ALUMINUM CORPORATION**

PAC-CLAD.COM SALES@PETERSENMAIL.COM

HQ: 1005 Tonne Road  
Elk Grove Village, IL 60007  
P: 800-PAC-CLAD  
F: 800-722-7150

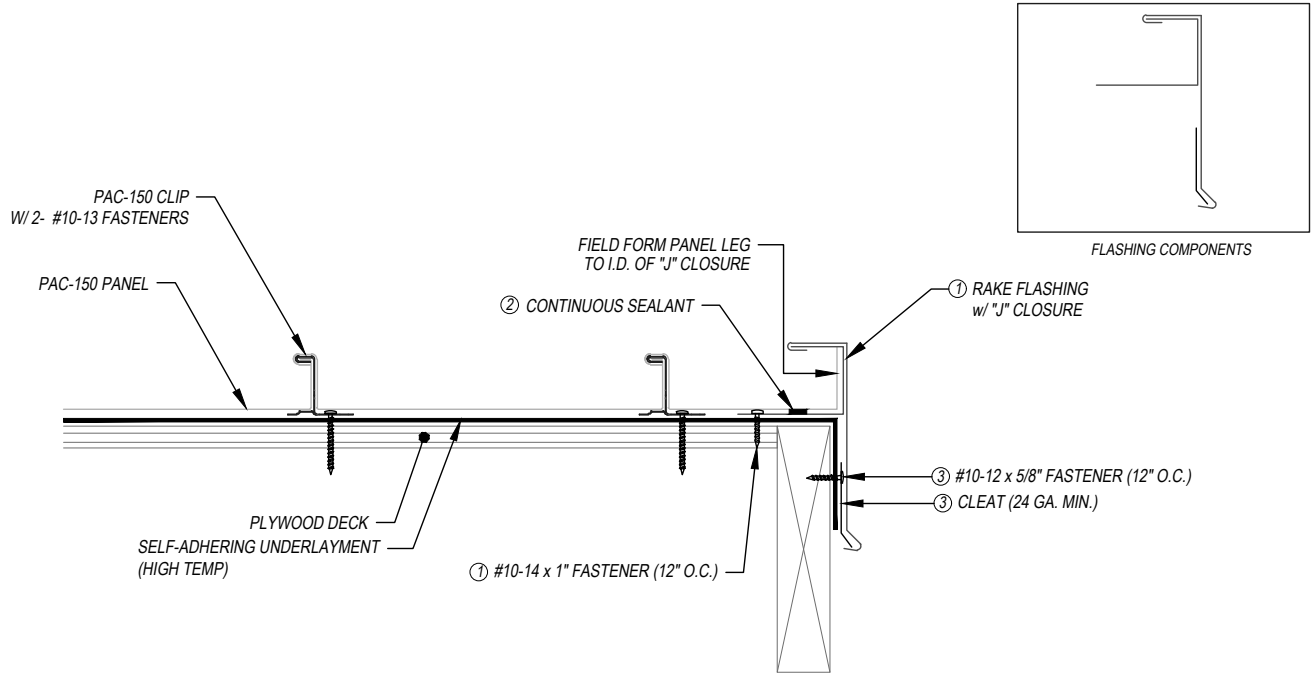
9060 Junction Drive  
Annapolis Junction, MD 20701  
P: 800-344-1400  
F: 301-953-7627

10551 PAC Road  
Tyler, TX 75707  
P: 800-441-8661  
F: 903-581-8592

102 Northpoint Parkway  
Acworth, GA 30102  
P: 800-272-4482  
F: 770-420-2533

1800 S. 7th Ave., Suite 130  
Phoenix, AZ 85007  
P: 833-750-1935  
F: 602-254-6504

1885 Station Parkway NW, Suite B  
Andover, MN 55304  
P: 877-571-2025  
F: 866-901-2935



**KEYNOTES:**

- TRIM FASTENERS ARE SELF-DRILL PANCAKE HEAD AND MUST BE INSTALLED IN A STAGGERED PATTERN.
- CLIP AND FASTENER MATERIAL: GALVANIZED WHEN STEEL PANELS ARE UTILIZED; STAINLESS STEEL WHEN ALUMINUM PANELS ARE UTILIZED.
- CLIP FASTENERS MUST BE OF SUFFICIENT LENGTH TO PENETRATE PLYWOOD DECK BY 5/8" MINIMUM THREAD LENGTH.
- PLYWOOD DECK MUST BE A **MINIMUM OF 5/8" THICK.**
- ① RAKE FLASHING:
  - PANEL LEG MUST BE FORMED TO WITHIN 1/8" OF J-CHANNEL WEB.
  - DECK SIDE LEG SHOULD BE A MINIMUM OF 3" LONG WITH FASTENER LOCATED 2" MAXIMUM FROM EDGE.
  - J-CHANNEL FORMED TO HEIGHT OF PANEL RIB.
- ② SEALANT CAN BE TUBE OR TAPE SEALANT AND MUST BE CONTINUOUS.
- ③ CLEAT: 24 GA. MINIMUM.

Job Name \_\_\_\_\_ Contractor \_\_\_\_\_

Date \_\_\_\_\_ Notes \_\_\_\_\_

**PETERSEN ALUMINUM CORPORATION**

**PAC-CLAD.COM SALES@PETERSENMAIL.COM**

HQ: 1005 Tonne Road  
Elk Grove Village, IL 60007  
P: 800-PAC-CLAD  
F: 800-722-7150

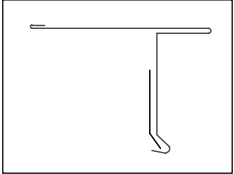
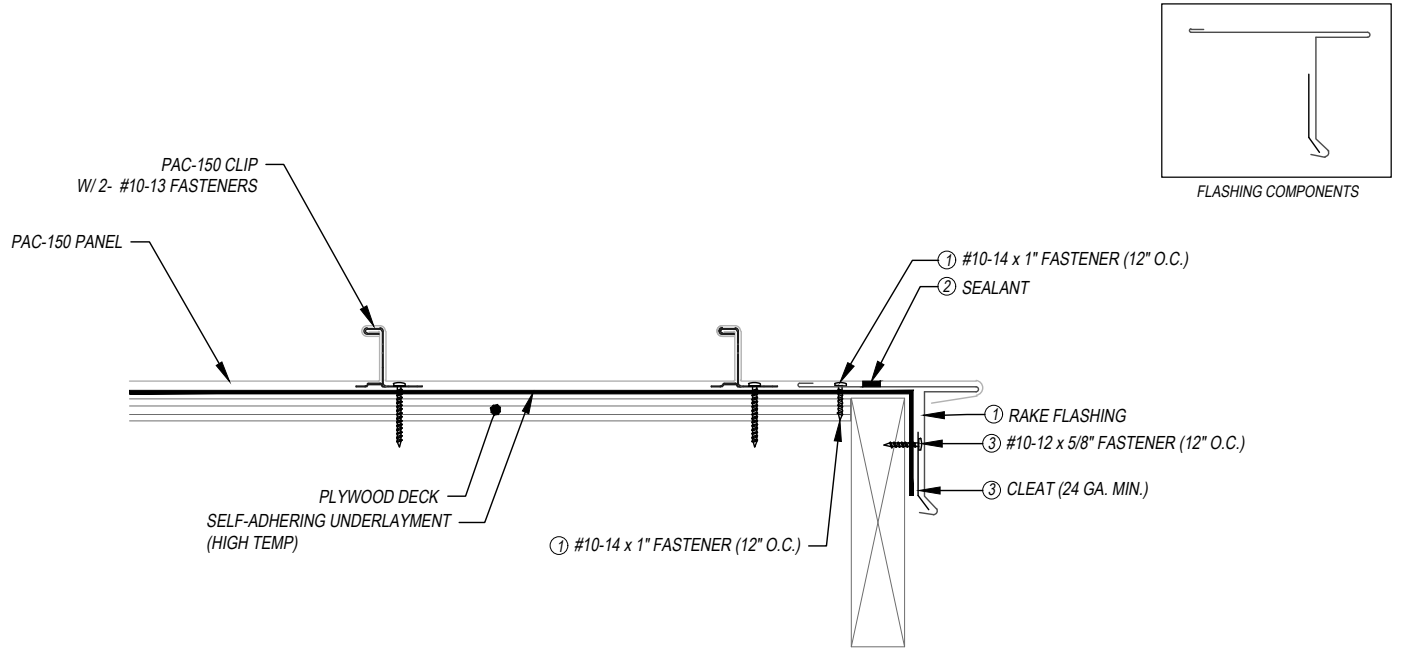
9060 Junction Drive  
Annapolis Junction, MD 20701  
P: 800-344-1400  
F: 301-953-7627

10551 PAC Road  
Tyler, TX 75707  
P: 800-441-8661  
F: 903-581-8592

102 Northpoint Parkway  
Acworth, GA 30102  
P: 800-272-4482  
F: 770-420-2533

1800 S. 7th Ave., Suite 130  
Phoenix, AZ 85007  
P: 833-750-1935  
F: 602-254-6504

1885 Station Parkway NW, Suite B  
Andover, MN 55304  
P: 877-571-2025  
F: 866-901-2935



FLASHING COMPONENTS

**KEYNOTES:**

- TRIM FASTENERS ARE SELF-DRILL PANCAKE HEAD AND MUST BE INSTALLED IN A STAGGERED PATTERN.
- CLIP AND FASTENER MATERIAL: GALVANIZED WHEN STEEL PANELS ARE UTILIZED; STAINLESS STEEL WHEN ALUMINUM PANELS ARE UTILIZED.
- CLIP FASTENERS MUST BE OF SUFFICIENT LENGTH TO PENETRATE PLYWOOD DECK BY 5/8" MINIMUM THREAD LENGTH.
- PLYWOOD DECK MUST BE A **MINIMUM OF 5/8" THICK.**
- ① RAKE FLASHING:
  - HEMMED DIMENSION: 1 1/2" MINIMUM; 2" MAXIMUM
  - DECK SIDE LEG SHOULD BE A MINIMUM OF 5" LONG WITH FASTENER LOCATED 2" MAXIMUM FROM EDGE.
  - PANEL HEM SHOULD BE CLOSED SECURELY TO HEM LEG OF RAKE FLASHING
- ② SEALANT CAN BE TUBE OR TAPE SEALANT AND MUST BE CONTINUOUS.
- ③ CLEAT: 24 GA. MINIMUM.

Job Name \_\_\_\_\_ Contractor \_\_\_\_\_

Date \_\_\_\_\_ Notes \_\_\_\_\_

**PETERSEN ALUMINUM CORPORATION**

PAC-CLAD.COM SALES@PETERSENMAIL.COM

HQ: 1005 Tonne Road  
Elk Grove Village, IL 60007  
P: 800-PAC-CLAD  
F: 800-722-7150

9060 Junction Drive  
Annapolis Junction, MD 20701  
P: 800-344-1400  
F: 301-953-7627

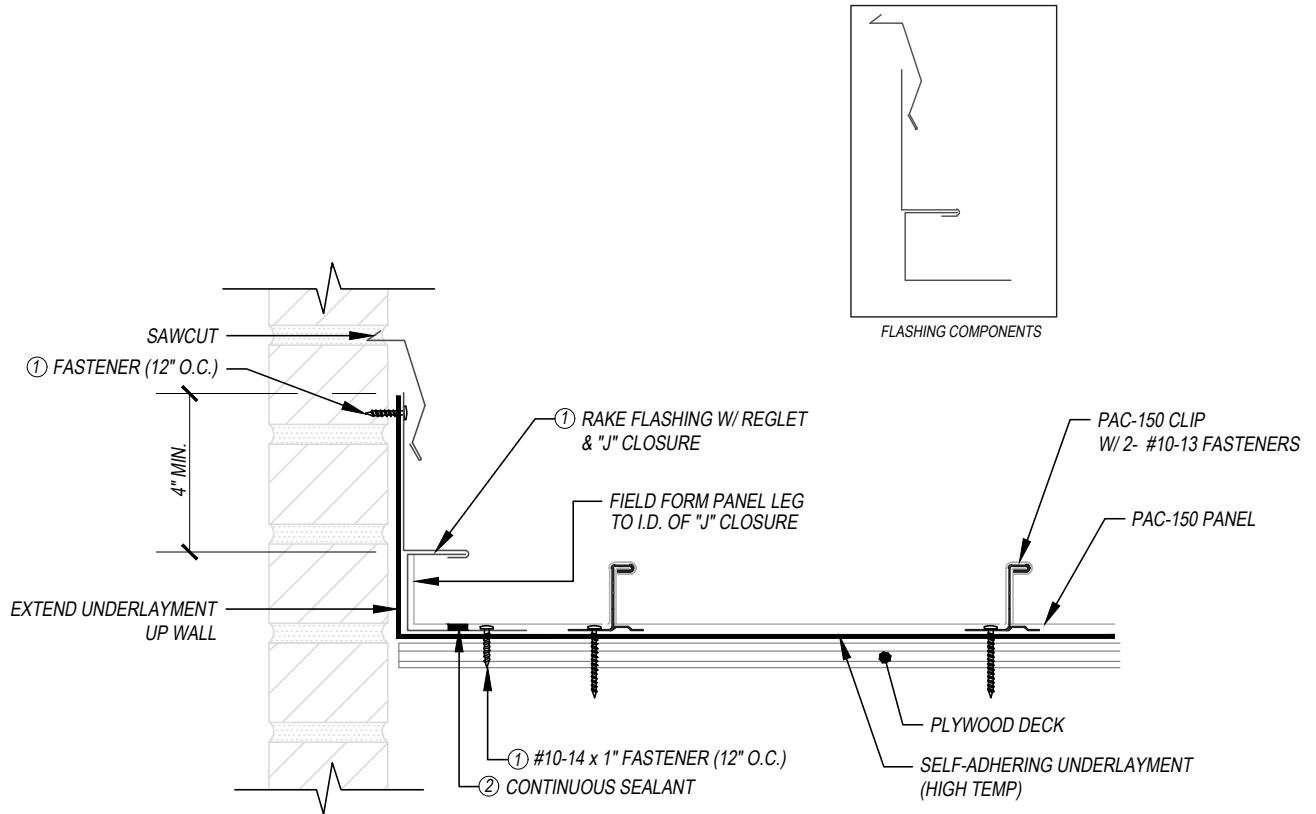
10551 PAC Road  
Tyler, TX 75707  
P: 800-441-8661  
F: 903-581-8592

102 Northpoint Parkway  
Acworth, GA 30102  
P: 800-272-4482  
F: 770-420-2533

1800 S. 7th Ave., Suite 130  
Phoenix, AZ 85007  
P: 833-750-1935  
F: 602-254-6504

1885 Station Parkway NW, Suite B  
Andover, MN 55304  
P: 877-571-2025  
F: 866-901-2935





**KEYNOTES:**

- TRIM FASTENERS ARE SELF-DRILL PANCAKE HEAD AND MUST BE INSTALLED IN A STAGGERED PATTERN.
- CLIP AND FASTENER MATERIAL: GALVANIZED WHEN STEEL PANELS ARE UTILIZED; STAINLESS STEEL WHEN ALUMINUM PANELS ARE UTILIZED.
- CLIP FASTENERS MUST BE OF SUFFICIENT LENGTH TO PENETRATE PLYWOOD DECK BY 5/8" MINIMUM THREAD LENGTH.
- PLYWOOD DECK MUST BE A **MINIMUM OF 5/8" THICK.**
- ① RAKE FLASHING:
  - PANEL LEG MUST BE FORMED TO WITHIN 1/8" OF J-CHANNEL WEB.
  - DECK SIDE LEG SHOULD BE A MINIMUM OF 3" LONG WITH FASTENER LOCATED 2" MAXIMUM FROM EDGE.
  - J-CHANNEL FORMED TO HEIGHT OF PANEL RIB.
- ② SEALANT CAN BE TUBE OR TAPE SEALANT AND MUST BE CONTINUOUS.

Job Name \_\_\_\_\_ Contractor \_\_\_\_\_

Date \_\_\_\_\_ Notes \_\_\_\_\_

**PETERSEN ALUMINUM CORPORATION**

**PAC-CLAD.COM SALES@PETERSENMAIL.COM**

HQ: 1005 Tonne Road  
Elk Grove Village, IL 60007  
P: 800-PAC-CLAD  
F: 800-722-7150

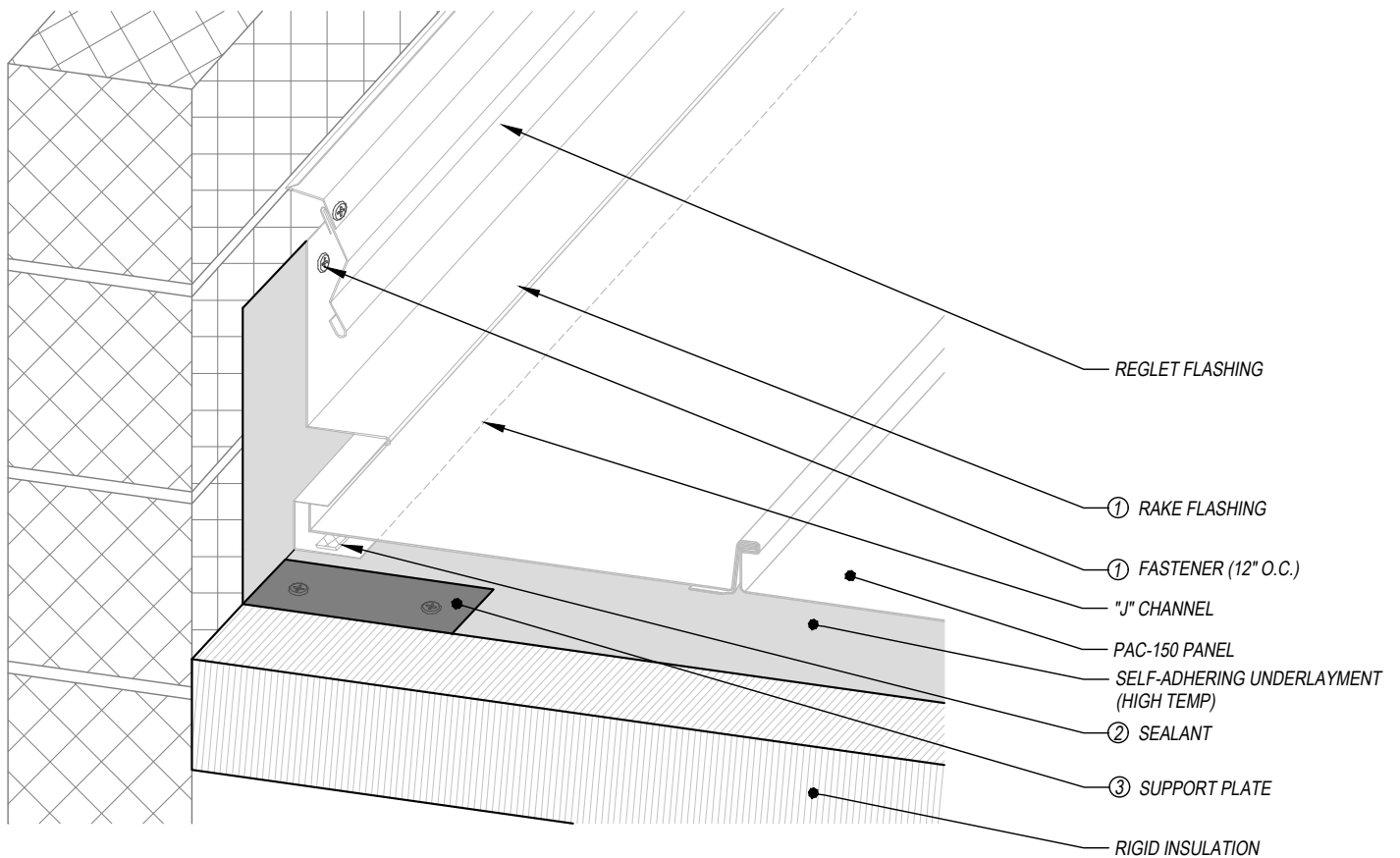
9060 Junction Drive  
Annapolis Junction, MD 20701  
P: 800-344-1400  
F: 301-953-7627

10551 PAC Road  
Tyler, TX 75707  
P: 800-441-8661  
F: 903-581-8592

102 Northpoint Parkway  
Acworth, GA 30102  
P: 800-272-4482  
F: 770-420-2533

1800 S. 7th Ave., Suite 130  
Phoenix, AZ 85007  
P: 833-750-1935  
F: 602-254-6504

1885 Station Parkway NW, Suite B  
Andover, MN 55304  
P: 877-571-2025  
F: 866-901-2935



Job Name \_\_\_\_\_ Contractor \_\_\_\_\_

Date \_\_\_\_\_ Notes \_\_\_\_\_

**PETERSEN ALUMINUM CORPORATION**

PAC-CLAD.COM SALES@PETERSENMAIL.COM

HQ: 1005 Tonne Road  
Elk Grove Village, IL 60007  
P: 800-PAC-CLAD  
F: 800-722-7150

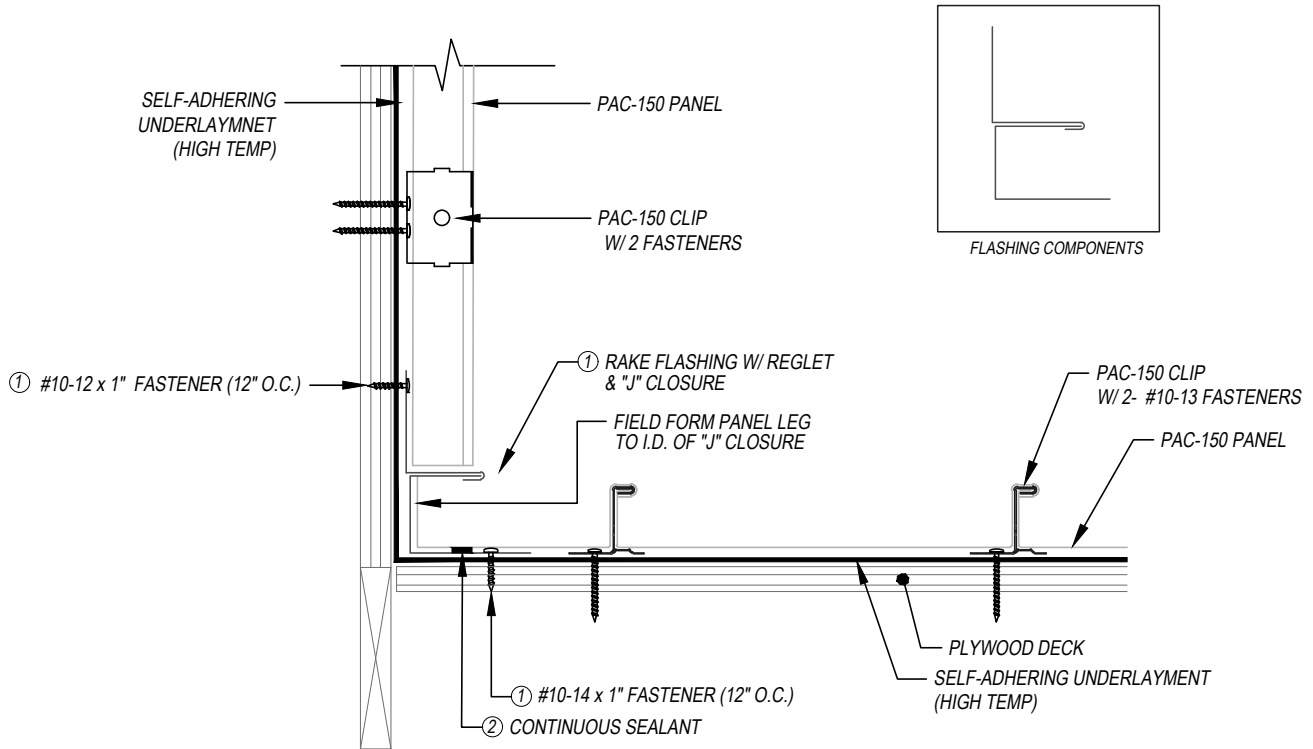
9060 Junction Drive  
Annapolis Junction, MD 20701  
P: 800-344-1400  
F: 301-953-7627

10551 PAC Road  
Tyler, TX 75707  
P: 800-441-8661  
F: 903-581-8592

102 Northpoint Parkway  
Acworth, GA 30102  
P: 800-272-4482  
F: 770-420-2533

1800 S. 7th Ave., Suite 130  
Phoenix, AZ 85007  
P: 833-750-1935  
F: 602-254-6504

1885 Station Parkway NW, Suite B  
Andover, MN 55304  
P: 877-571-2025  
F: 866-901-2935



**KEYNOTES:**

- TRIM FASTENERS ARE SELF-DRILL PANCAKE HEAD AND MUST BE INSTALLED IN A STAGGERED PATTERN.
  - CLIP AND FASTENER MATERIAL: GALVANIZED WHEN STEEL PANELS ARE UTILIZED; STAINLESS STEEL WHEN ALUMINUM PANELS ARE UTILIZED.
  - CLIP FASTENERS MUST BE OF SUFFICIENT LENGTH TO PENETRATE PLYWOOD DECK BY 5/8" MINIMUM THREAD LENGTH.
  - PLYWOOD DECK MUST BE A **MINIMUM OF 5/8" THICK.**
- ① RAKE FLASHING:
- PANEL LEG MUST BE FORMED TO WITHIN 1/8" OF J-CHANNEL WEB.
  - DECK SIDE LEG SHOULD BE A MINIMUM OF 3" LONG WITH FASTENER LOCATED 2" MAXIMUM FROM EDGE.
  - J-CHANNEL FORMED TO HEIGHT OF PANEL RIB.
- ② SEALANT CAN BE TUBE OR TAPE SEALANT AND MUST BE CONTINUOUS.

Job Name \_\_\_\_\_ Contractor \_\_\_\_\_

Date \_\_\_\_\_ Notes \_\_\_\_\_

**PETERSEN ALUMINUM CORPORATION**

PAC-CLAD.COM SALES@PETERSENMAIL.COM

HQ: 1005 Tonne Road  
Elk Grove Village, IL 60007  
P: 800-PAC-CLAD  
F: 800-722-7150

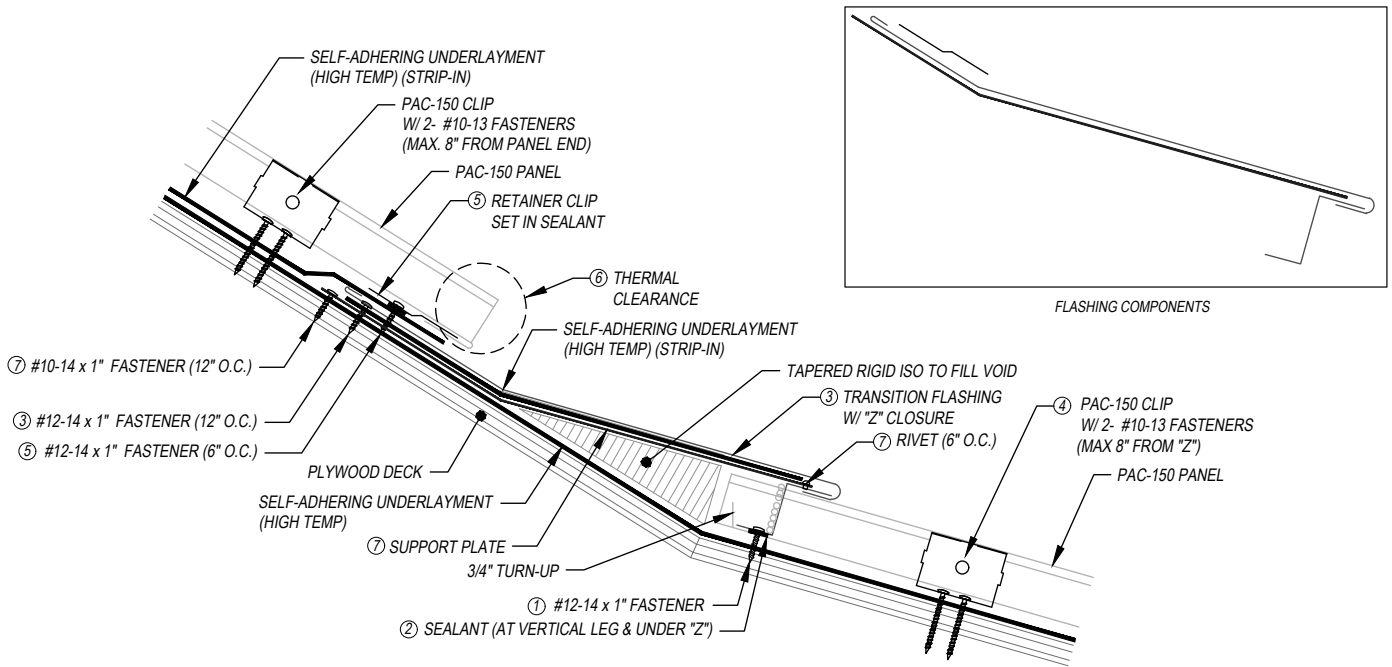
9060 Junction Drive  
Annapolis Junction, MD 20701  
P: 800-344-1400  
F: 301-953-7627

10551 PAC Road  
Tyler, TX 75707  
P: 800-441-8661  
F: 903-581-8592

102 Northpoint Parkway  
Acworth, GA 30102  
P: 800-272-4482  
F: 770-420-2533

1800 S. 7th Ave., Suite 130  
Phoenix, AZ 85007  
P: 833-750-1935  
F: 602-254-6504

1885 Station Parkway NW, Suite B  
Andover, MN 55304  
P: 877-571-2025  
F: 866-901-2935



**KEYNOTES:**

- TRIM FASTENERS ARE SELF-DRILL PANCAKE HEAD AND MUST BE INSTALLED IN A STAGGERED PATTERN.
  - CLIP AND FASTENER MATERIAL: GALVANIZED WHEN STEEL PANELS ARE UTILIZED; STAINLESS STEEL WHEN ALUMINUM PANELS ARE UTILIZED.
  - CLIP FASTENERS MUST BE OF SUFFICIENT LENGTH TO PENETRATE PLYWOOD DECK BY 5/8" MINIMUM THREAD LENGTH.
  - PLYWOOD DECK MUST BE A MINIMUM OF 5/8" THICK.
- ① "Z" COMPONENT
    - MINIMUM HEIGHT: 1/8" CLEARANCE OF PANEL RIB
    - FASTENED AS FOLLOWS: 12" & 16" PANELS (4 FASTENERS PER PANEL MINIMUM); 18" PANELS (6 FASTENERS PER PANEL MINIMUM)
    - FASTENING LEG: 1 1/4" MINIMUM TOP LEG: 1 1/2" MINIMUM
    - "Z" MUST BE CUT TO TIGHT FIT OF PANEL DIMENSION: 1/8" MAXIMUM GAP
  - ② SEALANT
    - TUBE OR TAPE SEALANT IS ACCEPTABLE BELOW THE "Z"
    - TUBE SEALANT PLACED AT BACKSIDE OF VERTICAL LEGS
    - 1" TAPE WIDTH OR 1/2" BEAD WIDTH PRIOR TO COMPRESSION
  - ③ TRANSITION FLASHING: HEMMED 1" AND FULLY ENGAGED TO "Z" CLOSURE.
  - ④ FIRST PANEL CLIP TO BE LOCATED A **MAXIMUM OF 8" FROM "Z" COMPONENT.**
  - ⑤ RETAINER CLIP: FASTENED TO SUPPORT PLATE AT 6" O.C. STAGGERED PATTERN.
  - ⑥ PANEL HEM THERMAL GAP CLEARANCE: MINIMUM 1 1/2" HEM WITH 1/2" CLEARANCE (CONSULT FACTORY)
  - ⑦ SUPPORT PLATE: 20 GA. MINIMUM

Job Name \_\_\_\_\_ Contractor \_\_\_\_\_

Date \_\_\_\_\_ Notes \_\_\_\_\_

**PETERSEN ALUMINUM CORPORATION**

**PAC-CLAD.COM SALES@PETERSENMAIL.COM**

HQ: 1005 Tonne Road  
 Elk Grove Village, IL 60007  
 P: 800-PAC-CLAD  
 F: 800-722-7150

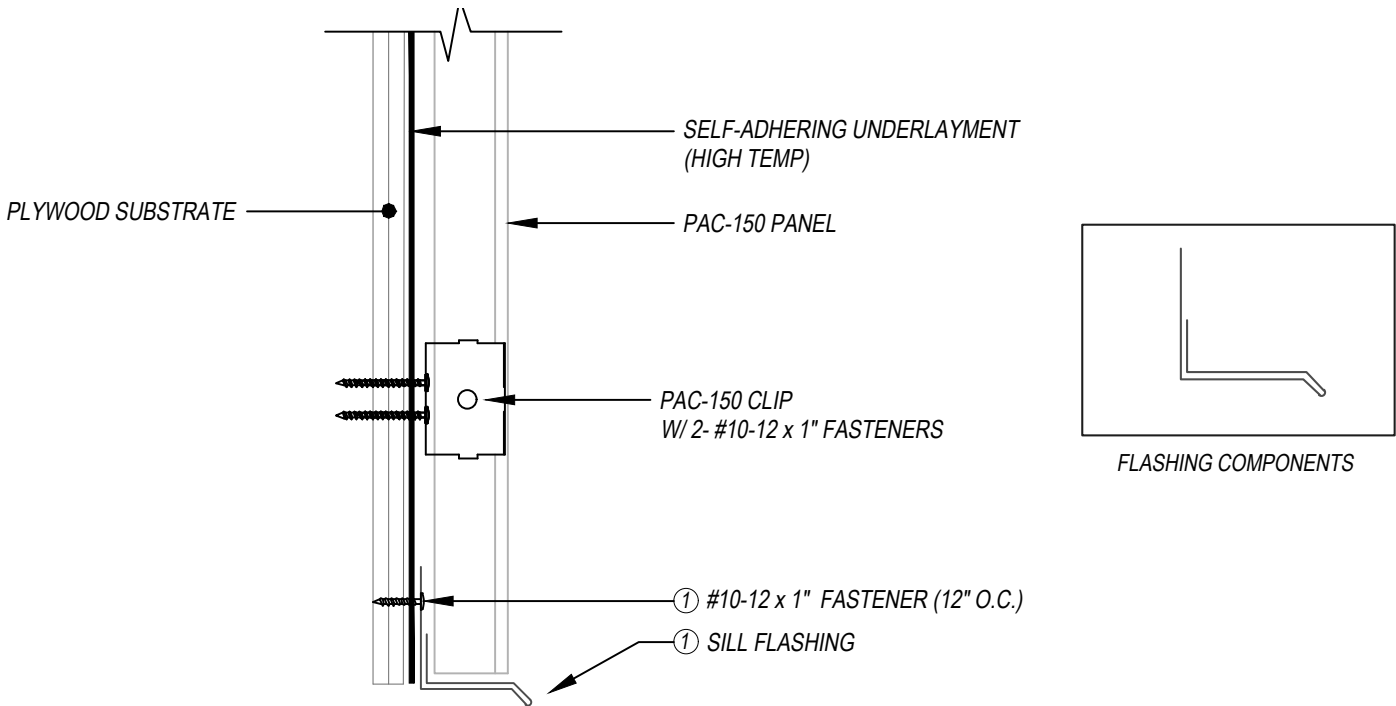
9060 Junction Drive  
 Annapolis Junction, MD 20701  
 P: 800-344-1400  
 F: 301-953-7627

10551 PAC Road  
 Tyler, TX 75707  
 P: 800-441-8661  
 F: 903-581-8592

102 Northpoint Parkway  
 Acworth, GA 30102  
 P: 800-272-4482  
 F: 770-420-2533

1800 S. 7th Ave., Suite 130  
 Phoenix, AZ 85007  
 P: 833-750-1935  
 F: 602-254-6504

1885 Station Parkway NW, Suite B  
 Andover, MN 55304  
 P: 877-571-2025  
 F: 866-901-2935



**KEYNOTES:**

- TRIM FASTENERS ARE SELF-DRILL PANCAKE HEAD AND MUST BE INSTALLED IN A STAGGERED PATTERN.
  - CLIPS AND FASTENERS MATERIAL: GALVANIZED WHEN STEEL PANELS ARE UTILIZED; STAINLESS STEEL WHEN ALUMINUM PANELS ARE UTILIZED.
- ① SILL FLASHING: FASTENED WITH #10 FASTENER AT MAXIMUM 12" ON-CENTER (STAGGERED PATTERN).

Job Name \_\_\_\_\_ Contractor \_\_\_\_\_

Date \_\_\_\_\_ Notes \_\_\_\_\_

**PETERSEN ALUMINUM CORPORATION**

**PAC-CLAD.COM SALES@PETERSENMAIL.COM**

HQ: 1005 Tonne Road  
Elk Grove Village, IL 60007  
P: 800-PAC-CLAD  
F: 800-722-7150

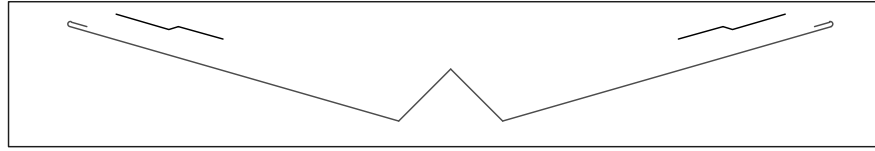
9060 Junction Drive  
Annapolis Junction, MD 20701  
P: 800-344-1400  
F: 301-953-7627

10551 PAC Road  
Tyler, TX 75707  
P: 800-441-8661  
F: 903-581-8592

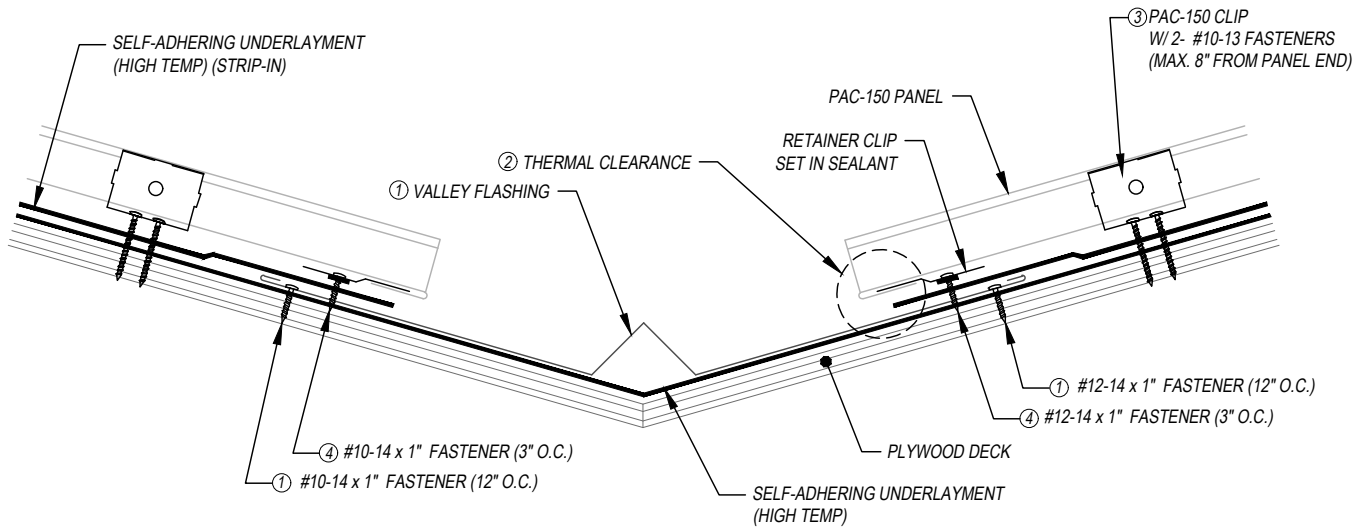
102 Northpoint Parkway  
Acworth, GA 30102  
P: 800-272-4482  
F: 770-420-2533

1800 S. 7th Ave., Suite 130  
Phoenix, AZ 85007  
P: 833-750-1935  
F: 602-254-6504

1885 Station Parkway NW, Suite B  
Andover, MN 55304  
P: 877-571-2025  
F: 866-901-2935



FLASHING COMPONENTS



**KEYNOTES:**

- TRIM FASTENERS ARE SELF-DRILL PANCAKE HEAD AND MUST BE INSTALLED IN A STAGGERED PATTERN.
- CLIP AND FASTENER MATERIAL: GALVANIZED WHEN STEEL PANELS ARE UTILIZED; STAINLESS STEEL WHEN ALUMINUM PANELS ARE UTILIZED.
- CLIP FASTENERS MUST BE OF SUFFICIENT LENGTH TO PENETRATE PLYWOOD DECK BY 5/8" MINIMUM THREAD LENGTH.
- PLYWOOD DECK MUST BE A **MINIMUM OF 5/8" THICK.**
- ① VALLEY FLASHING FASTENED AT MAXIMUM 12" ON-CENTER SPACING.
- ② PANEL HEM THERMAL GAP CLEARANCE: MINIMUM 1 1/2" HEM WITH 1/2" CLEARANCE (CONSULT FACTORY).
- ③ FIRST PANEL CLIP TO BE LOCATED A **MAXIMUM OF 8" FROM PANEL END.**
- ④ RETAINER CLIP: FASTENED TO SUPPORT PLATE AT 3" O.C. STAGGERED PATTERN

Job Name \_\_\_\_\_ Contractor \_\_\_\_\_

Date \_\_\_\_\_ Notes \_\_\_\_\_

**PETERSEN ALUMINUM CORPORATION**

**PAC-CLAD.COM SALES@PETERSENMAIL.COM**

HQ: 1005 Tonne Road  
Elk Grove Village, IL 60007  
P: 800-PAC-CLAD  
F: 800-722-7150

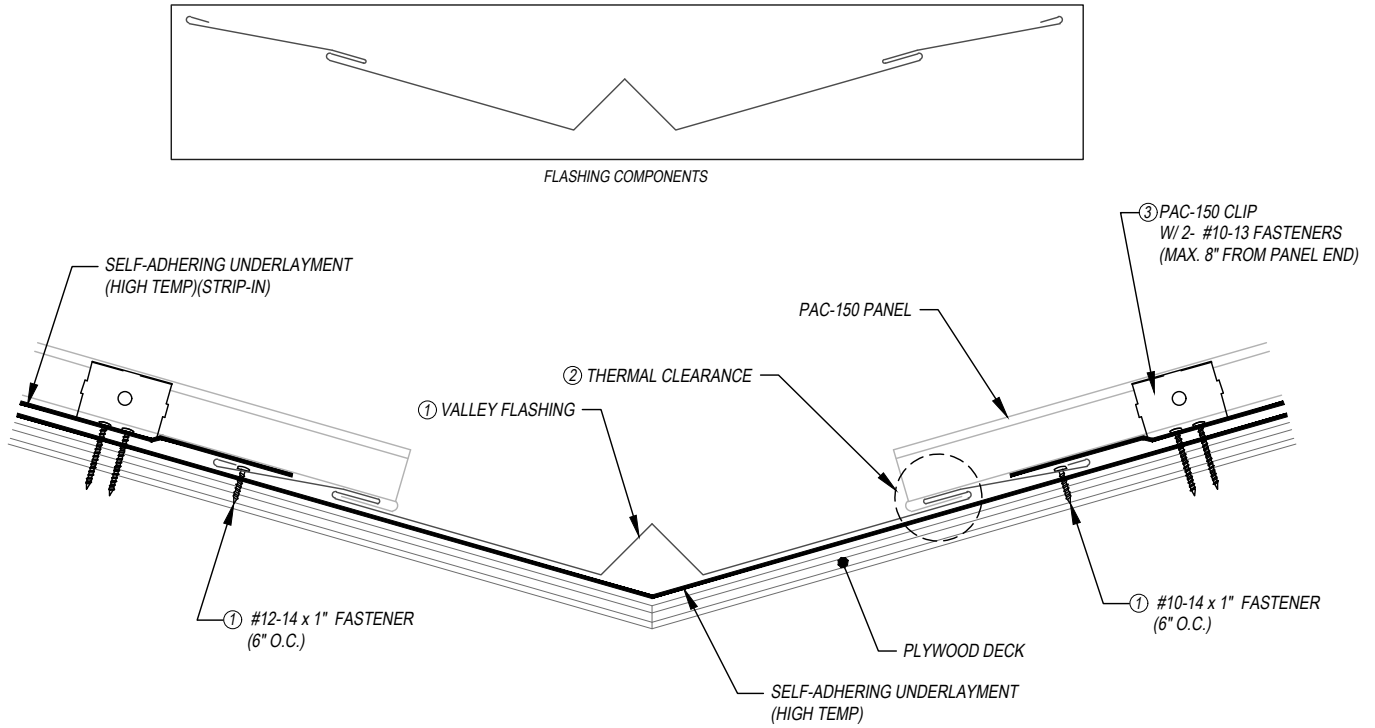
9060 Junction Drive  
Annapolis Junction, MD 20701  
P: 800-344-1400  
F: 301-953-7627

10551 PAC Road  
Tyler, TX 75707  
P: 800-441-8661  
F: 903-581-8592

102 Northpoint Parkway  
Acworth, GA 30102  
P: 800-272-4482  
F: 770-420-2533

1800 S. 7th Ave., Suite 130  
Phoenix, AZ 85007  
P: 833-750-1935  
F: 602-254-6504

1885 Station Parkway NW, Suite B  
Andover, MN 55304  
P: 877-571-2025  
F: 866-901-2935



**KEYNOTES:**

- TRIM FASTENERS ARE SELF-DRILL PANCAKE HEAD AND MUST BE INSTALLED IN A STAGGERED PATTERN.
- CLIP AND FASTENER MATERIAL: GALVANIZED WHEN STEEL PANELS ARE UTILIZED; STAINLESS STEEL WHEN ALUMINUM PANELS ARE UTILIZED.
- CLIP FASTENERS MUST BE OF SUFFICIENT LENGTH TO PENETRATE PLYWOOD DECK BY 5/8" MINIMUM THREAD LENGTH.
- PLYWOOD DECK MUST BE A **MINIMUM OF 5/8" THICK.**
- ① VALLEY FLASHING FASTENED AT MAXIMUM 6" ON-CENTER SPACING.
- ② PANEL HEM THERMAL GAP CLEARANCE: MINIMUM 1 1/2" HEM WITH 1/2" CLEARANCE (CONSULT FACTORY).
- ③ FIRST PANEL CLIP TO BE LOCATED A **MAXIMUM OF 8" FROM PANEL END.**

Job Name \_\_\_\_\_ Contractor \_\_\_\_\_

Date \_\_\_\_\_ Notes \_\_\_\_\_

**PETERSEN ALUMINUM CORPORATION**

**PAC-CLAD.COM SALES@PETERSENMAIL.COM**

HQ: 1005 Tonne Road  
Elk Grove Village, IL 60007  
P: 800-PAC-CLAD  
F: 800-722-7150

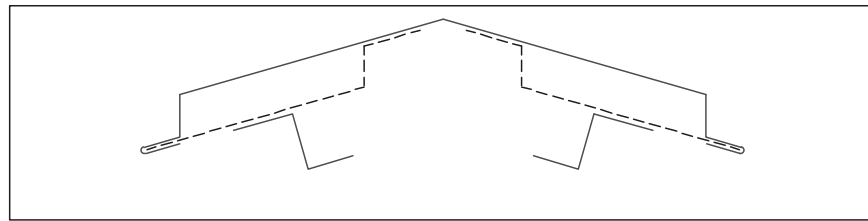
9060 Junction Drive  
Annapolis Junction, MD 20701  
P: 800-344-1400  
F: 301-953-7627

10551 PAC Road  
Tyler, TX 75707  
P: 800-441-8661  
F: 903-581-8592

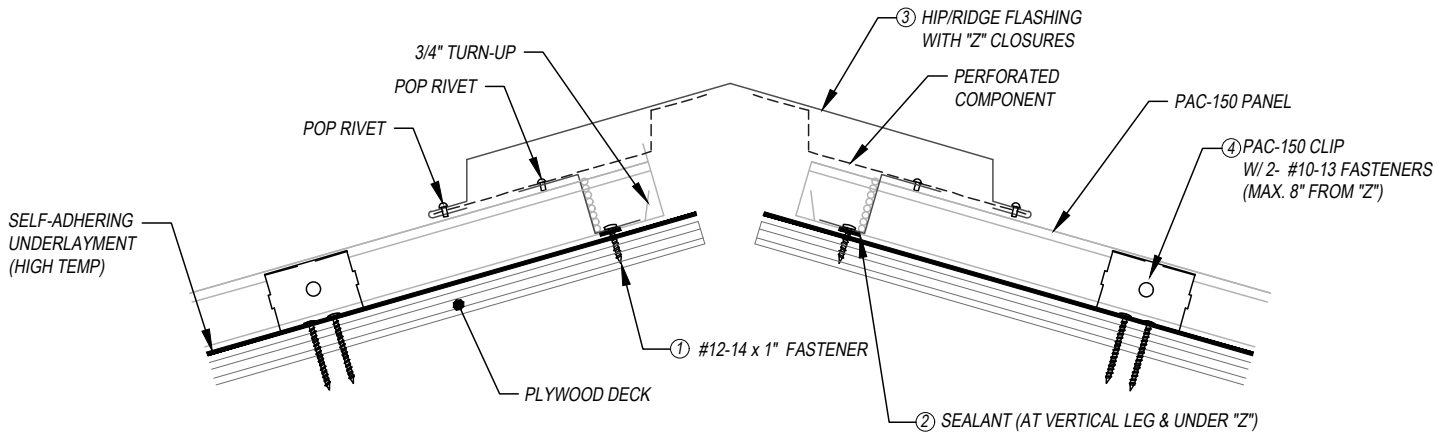
102 Northpoint Parkway  
Acworth, GA 30102  
P: 800-272-4482  
F: 770-420-2533

1800 S. 7th Ave., Suite 130  
Phoenix, AZ 85007  
P: 833-750-1935  
F: 602-254-6504

1885 Station Parkway NW, Suite B  
Andover, MN 55304  
P: 877-571-2025  
F: 866-901-2935



FLASHING COMPONENTS



**KEYNOTES:**

- TRIM FASTENERS ARE SELF-DRILL PANCAKE HEAD AND MUST BE INSTALLED IN A STAGGERED PATTERN.
- CLIP AND FASTENER MATERIAL: GALVANIZED WHEN STEEL PANELS ARE UTILIZED; STAINLESS STEEL WHEN ALUMINUM PANELS ARE UTILIZED.
- CLIP FASTENERS MUST BE OF SUFFICIENT LENGTH TO PENETRATE PLYWOOD DECK BY 5/8" MINIMUM THREAD LENGTH.
- PLYWOOD DECK MUST BE A **MINIMUM OF 5/8" THICK.**
- ① "Z" COMPONENT
  - MINIMUM HEIGHT: 1/8" CLEARANCE OF PANEL RIB
  - FASTENED AS FOLLOWS: 12" & 16" PANELS (4 FASTENERS PER PANEL MINIMUM); 18" PANELS (6 FASTENERS PER PANEL MINIMUM)
  - FASTENING LEG: 1 1/4" MINIMUM TOP LEG: 1 1/2" MINIMUM
  - "Z" MUST BE CUT TO TIGHT FIT OF PANEL DIMENSION: **1/8" MAXIMUM GAP**
- ② SEALANT
  - TUBE OR TAPE SEALANT IS ACCEPTABLE BELOW THE "Z"
  - TUBE SEALANT PLACED AT BACKSIDE OF VERTICAL LEGS
  - 1" TAPE WIDTH OR 1/2" BEAD WIDTH PRIOR TO COMPRESSION
- ③ COVER: HEMMED 1" AND FULLY ENGAGED TO "Z" CLOSURE.
- ④ FIRST PANEL CLIP TO BE LOCATED A **MAXIMUM OF 8" FROM "Z" COMPONENT.**

Job Name \_\_\_\_\_ Contractor \_\_\_\_\_

Date \_\_\_\_\_ Notes \_\_\_\_\_